



GAT MONTHLY MEMBERSHIP PROGRESS REPORT

Results as of: 6/30/2022

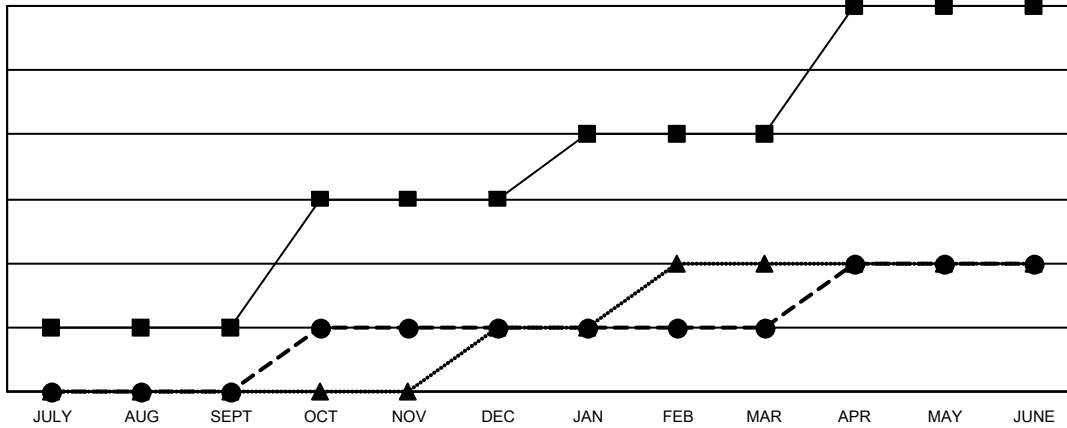
Multiple District 16

LOCATION: NEW JERSEY

Clubs			
RESULTS FOR 2021-2022			
QUARTER	NEW CLUB GOAL	NEW CLUBS	DROPPED CLUBS
JULY/AUG/SEPT	1	0	2
OCT/NOV/DEC	2	1	3
JAN/FEB/MAR	1	0	0
APR/MAY/JUNE	2	1	1

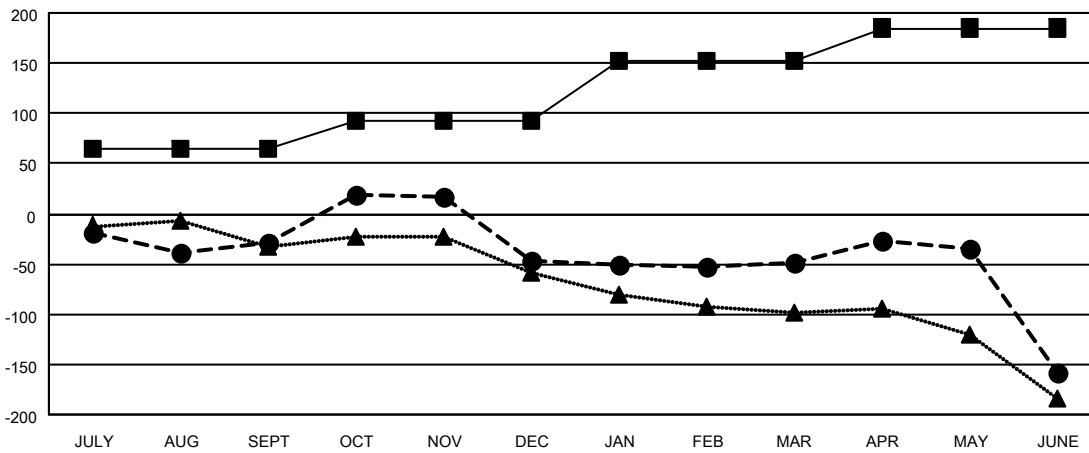
Members			
RESULTS FOR 2021-2022			
QUARTER	MEMBER GROWTH NET GOAL	MEMBER GROWTH ACTUAL	DROPPED MEMBERS ACTUAL (including transfers)
JULY/AUG/SEPT	65	97	112
OCT/NOV/DEC	28	106	122
JAN/FEB/MAR	60	101	73
APR/MAY/JUNE	32	120	217

GOALS AND ACTUAL NEW CLUBS CUMULATIVE



- CURRENT YEAR GOALS FOR NEW CLUBS
- CURRENT YEAR ACTUAL NEW CLUBS
- ▲- LAST YEAR ACTUAL NEW CLUBS

GOALS AND ACTUAL MEMBERS CUMULATIVE



- MEMBER GROWTH NET GOAL
- MEMBER GROWTH ACTUAL
- ▲- LAST YEAR MEMBERSHIP ACTUAL

DROPPED CLUBS: 6	
DROPPED MEMBERS	
DECEASED	48
CLUB CANCELLED	62
OTHER	414
TOTAL	524

84 CLUBS OF 173 ADDED 1 OR MORE NEW MEMBERS

[CLICK HERE FOR CUMULATIVE MEMBERSHIP DATA](#)

GENDER DISTRIBUTION	
MALE	2,581 (65.03%)
FEMALE	1,374 (34.62%)
NON BINARY	2 (0.05%)
PREFER NOT TO ANSWER	12 (0.30%)
TOTAL FAMILY UNIT MEMBERS	721
FAMILY MEMBERS PAYING HALF DUES	377