



GAT MONTHLY MEMBERSHIP PROGRESS REPORT

Results as of: 6/30/2022

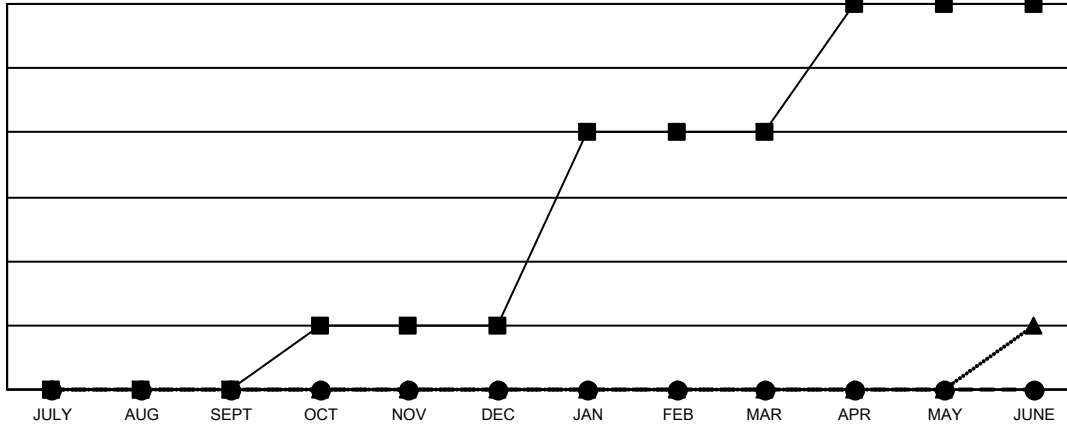
Multiple District 24

LOCATION: VIRGINIA

Clubs			
RESULTS FOR 2021-2022			
QUARTER	NEW CLUB GOAL	NEW CLUBS	DROPPED CLUBS
JULY/AUG/SEPT	0	0	5
OCT/NOV/DEC	1	0	0
JAN/FEB/MAR	3	0	3
APR/MAY/JUNE	2	0	3

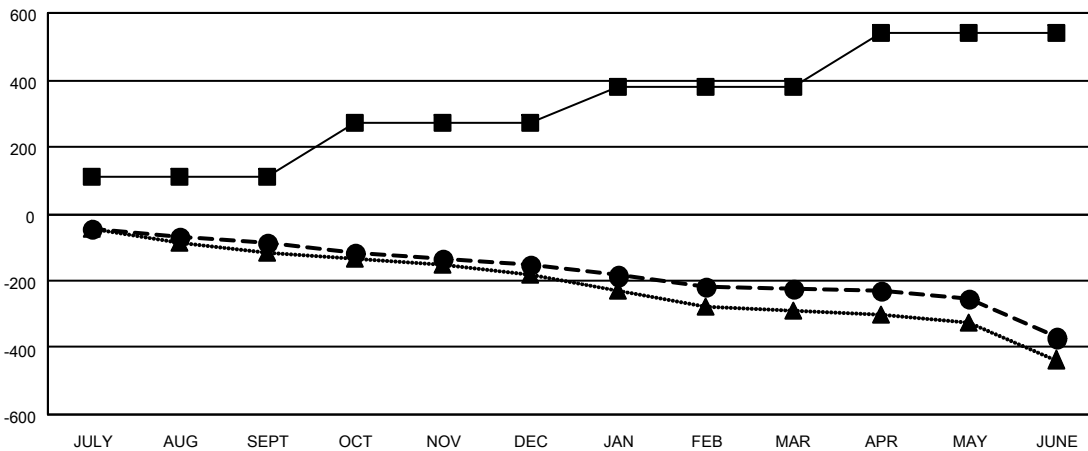
Members			
RESULTS FOR 2021-2022			
QUARTER	MEMBER GROWTH NET GOAL	MEMBER GROWTH ACTUAL	DROPPED MEMBERS ACTUAL (including transfers)
JULY/AUG/SEPT	110	172	225
OCT/NOV/DEC	160	114	167
JAN/FEB/MAR	110	122	174
APR/MAY/JUNE	160	159	283

GOALS AND ACTUAL NEW CLUBS CUMULATIVE



- CURRENT YEAR GOALS FOR NEW CLUBS
- CURRENT YEAR ACTUAL NEW CLUBS
- ▲- LAST YEAR ACTUAL NEW CLUBS

GOALS AND ACTUAL MEMBERS CUMULATIVE



- MEMBER GROWTH NET GOAL
- MEMBER GROWTH ACTUAL
- ▲- LAST YEAR MEMBERSHIP ACTUAL

DROPPED CLUBS: 11	133 CLUBS OF 243 ADDED 1 OR MORE NEW MEMBERS	GENDER DISTRIBUTION
DROPPED MEMBERS	CLICK HERE FOR CUMULATIVE MEMBERSHIP DATA	MALE 3,549 (64.25%)
DECEASED 130		FEMALE 1,975 (35.75%)
CLUB CANCELLED 92		NON BINARY 0 (0.00%)
OTHER 626		PREFER NOT TO ANSWER 0 (0.00%)
TOTAL 848		TOTAL FAMILY UNIT MEMBERS 933
		FAMILY MEMBERS PAYING HALF DUES 470