



GAT MONTHLY MEMBERSHIP PROGRESS REPORT

Results as of: 6/30/2022

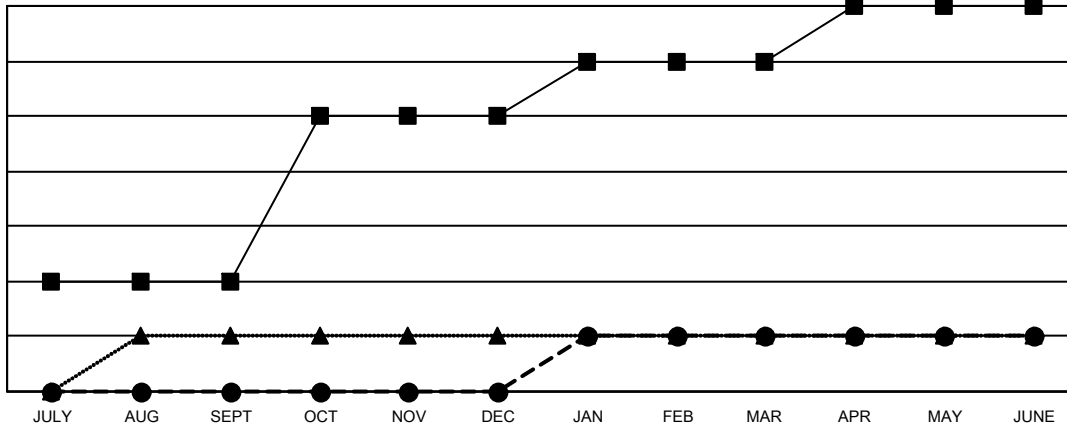
Multiple District 25

LOCATION: INDIANA

Clubs			
RESULTS FOR 2021-2022			
QUARTER	NEW CLUB GOAL	NEW CLUBS	DROPPED CLUBS
JULY/AUG/SEPT	2	0	6
OCT/NOV/DEC	3	0	6
JAN/FEB/MAR	1	1	2
APR/MAY/JUNE	1	0	2

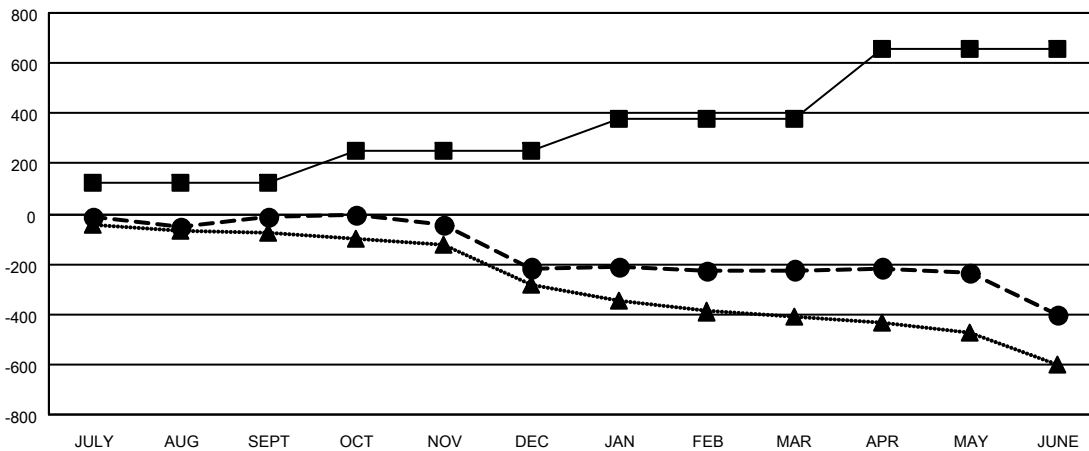
Members			
RESULTS FOR 2021-2022			
QUARTER	MEMBER GROWTH NET GOAL	MEMBER GROWTH ACTUAL	DROPPED MEMBERS ACTUAL (including transfers)
JULY/AUG/SEPT	125	243	213
OCT/NOV/DEC	126	170	367
JAN/FEB/MAR	127	239	195
APR/MAY/JUNE	279	224	359

GOALS AND ACTUAL NEW CLUBS CUMULATIVE



- CURRENT YEAR GOALS FOR NEW CLUBS
- CURRENT YEAR ACTUAL NEW CLUBS
- ▲- LAST YEAR ACTUAL NEW CLUBS

GOALS AND ACTUAL MEMBERS CUMULATIVE



- MEMBER GROWTH NET GOAL
- MEMBER GROWTH ACTUAL
- ▲- LAST YEAR MEMBERSHIP ACTUAL

DROPPED CLUBS: 16	
DROPPED MEMBERS	
DECEASED	202
CLUB CANCELLED	178
OTHER	754
TOTAL	1,134

201 CLUBS OF 356 ADDED 1 OR MORE NEW MEMBERS

[CLICK HERE FOR CUMULATIVE MEMBERSHIP DATA](#)

GENDER DISTRIBUTION	
MALE	5,825 (68.62%)
FEMALE	2,661 (31.35%)
NON BINARY	0 (0.00%)
PREFER NOT TO ANSWER	3 (0.04%)
TOTAL FAMILY UNIT MEMBERS	2,085
FAMILY MEMBERS PAYING HALF DUES	1,069