



GAT MONTHLY MEMBERSHIP PROGRESS REPORT

Results as of: 6/30/2022

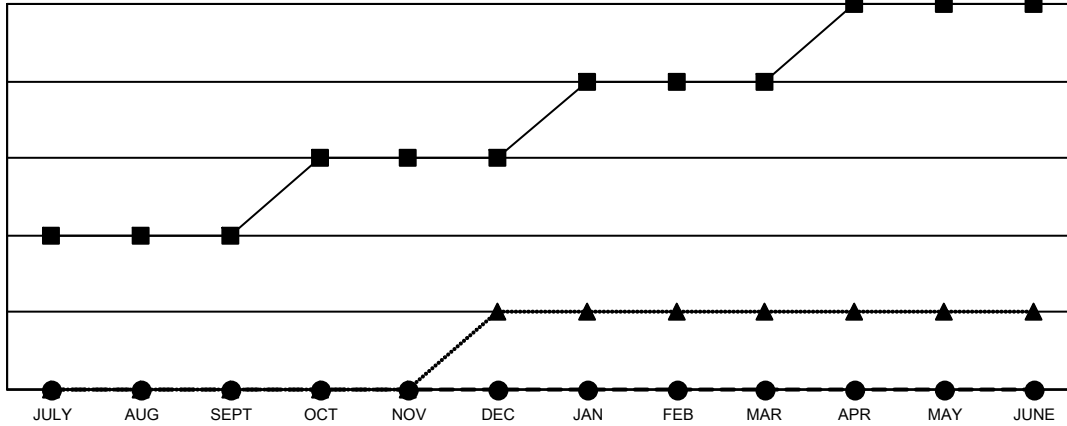
Multiple District 29

LOCATION: WEST VIRGINIA

Clubs			
RESULTS FOR 2021-2022			
QUARTER	NEW CLUB GOAL	NEW CLUBS	DROPPED CLUBS
JULY/AUG/SEPT	2	0	1
OCT/NOV/DEC	1	0	2
JAN/FEB/MAR	1	0	3
APR/MAY/JUNE	1	0	3

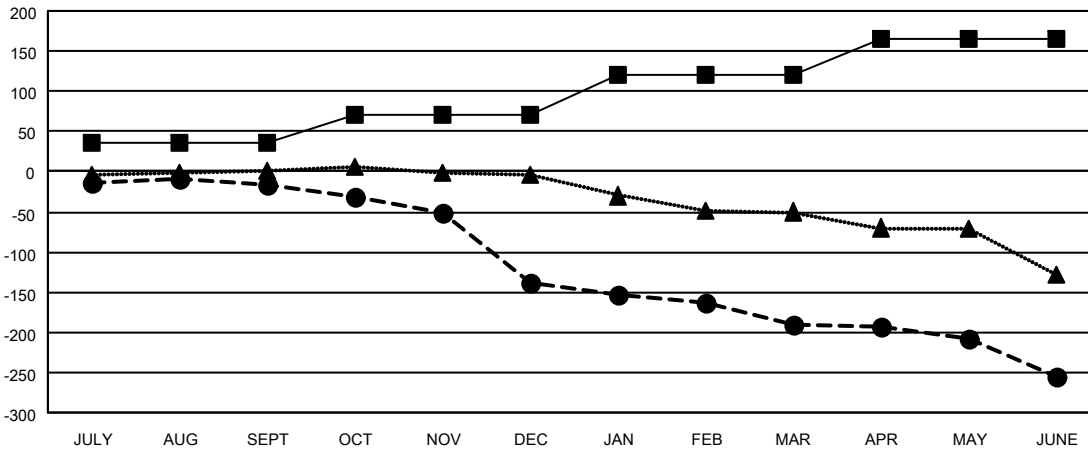
Members			
RESULTS FOR 2021-2022			
QUARTER	MEMBER GROWTH NET GOAL	MEMBER GROWTH ACTUAL	DROPPED MEMBERS ACTUAL (including transfers)
JULY/AUG/SEPT	35	59	72
OCT/NOV/DEC	35	52	171
JAN/FEB/MAR	50	68	116
APR/MAY/JUNE	45	124	173

GOALS AND ACTUAL NEW CLUBS CUMULATIVE



- CURRENT YEAR GOALS FOR NEW CLUBS
- CURRENT YEAR ACTUAL NEW CLUBS
- ▲- LAST YEAR ACTUAL NEW CLUBS

GOALS AND ACTUAL MEMBERS CUMULATIVE



- MEMBER GROWTH NET GOAL
- MEMBER GROWTH ACTUAL
- ▲- LAST YEAR MEMBERSHIP ACTUAL

DROPPED CLUBS: 9	87 CLUBS OF 165 ADDED 1 OR MORE NEW MEMBERS	GENDER DISTRIBUTION
DROPPED MEMBERS	CLICK HERE FOR CUMULATIVE MEMBERSHIP DATA	MALE 2,214 (63.44%)
DECEASED 93		FEMALE 1,276 (36.56%)
CLUB CANCELLED 35		NON BINARY 0 (0.00%)
OTHER 404		PREFER NOT TO ANSWER 0 (0.00%)
TOTAL 532		TOTAL FAMILY UNIT MEMBERS 1,020
		FAMILY MEMBERS PAYING HALF DUES 523