



GAT MONTHLY MEMBERSHIP PROGRESS REPORT

Results as of: 6/30/2022

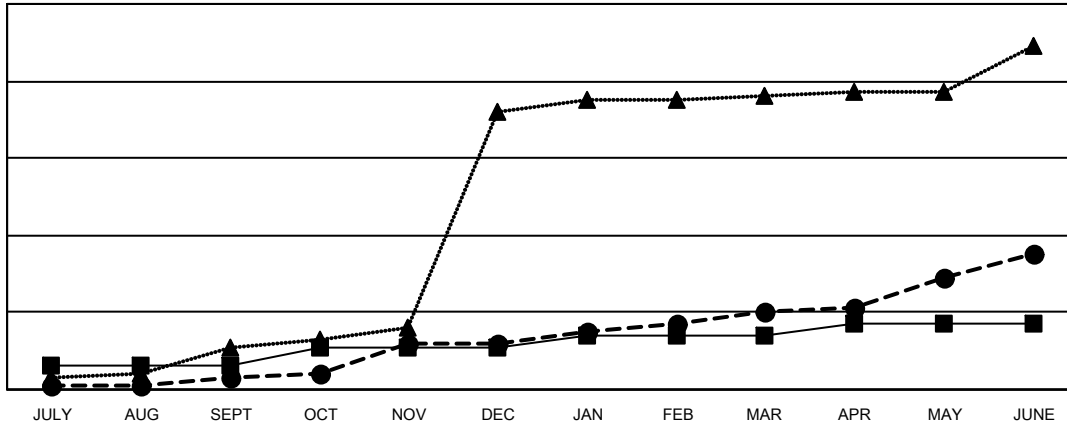
Multiple District 316

LOCATION: INDIA

| Clubs | | | |
|-----------------------|---------------|-----------|---------------|
| RESULTS FOR 2021-2022 | | | |
| QUARTER | NEW CLUB GOAL | NEW CLUBS | DROPPED CLUBS |
| JULY/AUG/SEPT | 6 | 3 | 23 |
| OCT/NOV/DEC | 5 | 9 | 14 |
| JAN/FEB/MAR | 3 | 8 | 7 |
| APR/MAY/JUNE | 3 | 15 | 32 |

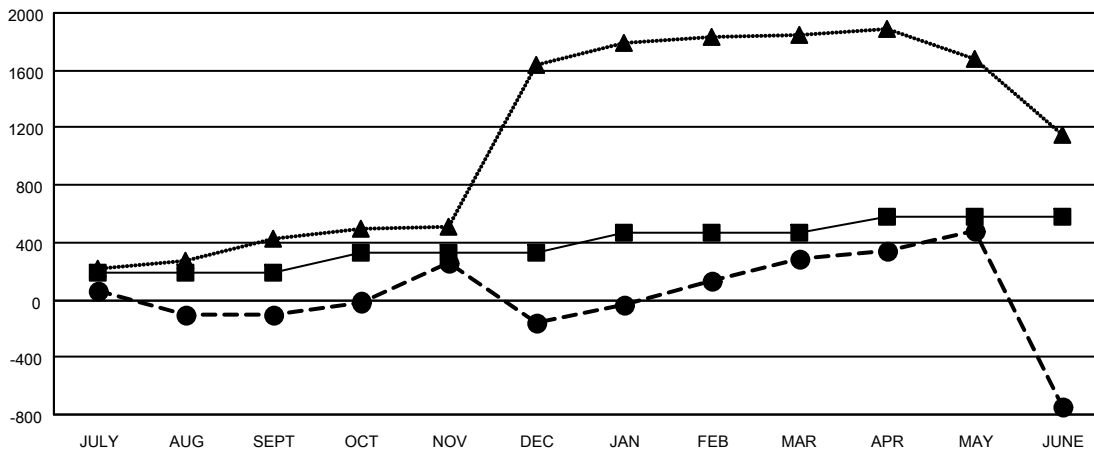
| Members | | | |
|-----------------------|------------------------|----------------------|--|
| RESULTS FOR 2021-2022 | | | |
| QUARTER | MEMBER GROWTH NET GOAL | MEMBER GROWTH ACTUAL | DROPPED MEMBERS ACTUAL (including transfers) |
| JULY/AUG/SEPT | 185 | 434 | 504 |
| OCT/NOV/DEC | 145 | 705 | 753 |
| JAN/FEB/MAR | 135 | 624 | 124 |
| APR/MAY/JUNE | 120 | 1,381 | 2,346 |

GOALS AND ACTUAL NEW CLUBS CUMULATIVE



- CURRENT YEAR GOALS FOR NEW CLUBS
- CURRENT YEAR ACTUAL NEW CLUBS
- ▲- LAST YEAR ACTUAL NEW CLUBS

GOALS AND ACTUAL MEMBERS CUMULATIVE



- MEMBER GROWTH NET GOAL
- MEMBER GROWTH ACTUAL
- ▲- LAST YEAR MEMBERSHIP ACTUAL

| | |
|------------------------|--------------|
| DROPPED CLUBS: 76 | |
| DROPPED MEMBERS | |
| DECEASED | 76 |
| CLUB CANCELLED | 921 |
| OTHER | 2,730 |
| TOTAL | 3,727 |

287 CLUBS OF 520 ADDED 1 OR MORE NEW MEMBERS

[CLICK HERE FOR CUMULATIVE MEMBERSHIP DATA](#)

| GENDER DISTRIBUTION | |
|--|-----------------|
| MALE | 10,617 (79.76%) |
| FEMALE | 2,687 (20.19%) |
| NON BINARY | 0 (0.00%) |
| PREFER NOT TO ANSWER | 7 (0.05%) |
| TOTAL FAMILY UNIT MEMBERS | 4,908 |
| FAMILY MEMBERS PAYING HALF DUES | 3,106 |