



GAT MONTHLY MEMBERSHIP PROGRESS REPORT

Results as of: 6/30/2022

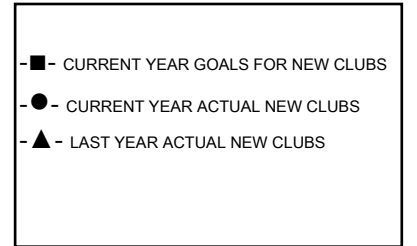
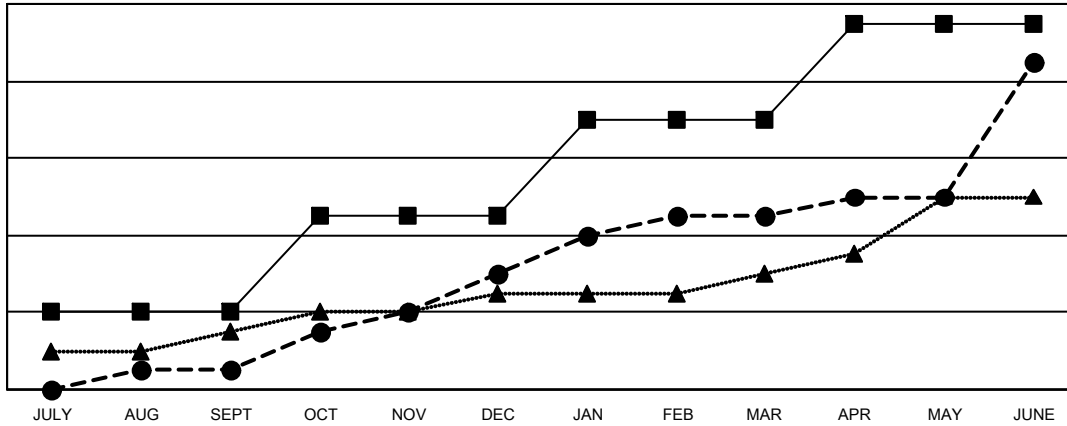
Multiple District 411

LOCATION: KENYA AFRICA

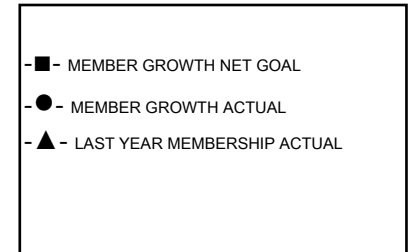
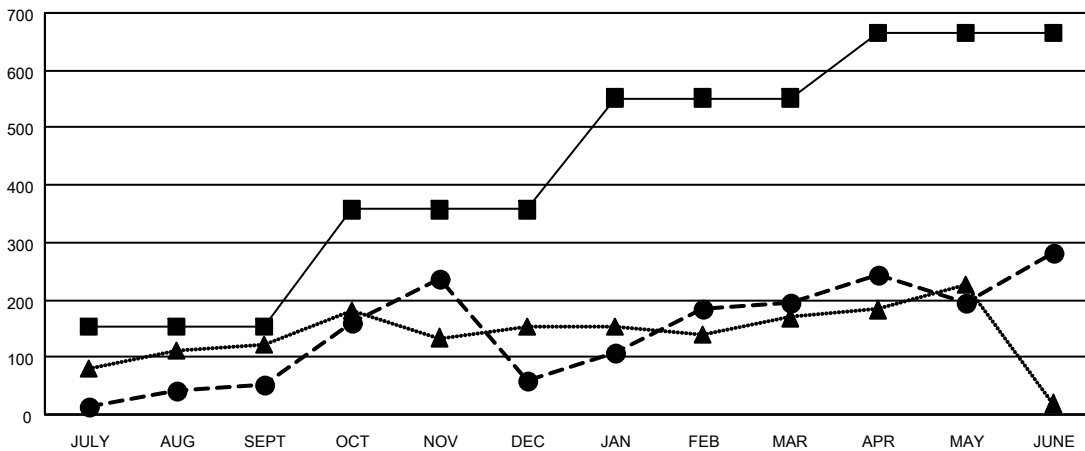
Clubs			
RESULTS FOR 2021-2022			
QUARTER	NEW CLUB GOAL	NEW CLUBS	DROPPED CLUBS
JULY/AUG/SEPT	4	1	2
OCT/NOV/DEC	5	5	8
JAN/FEB/MAR	5	3	1
APR/MAY/JUNE	5	8	2

Members			
RESULTS FOR 2021-2022			
QUARTER	MEMBER GROWTH NET GOAL	MEMBER GROWTH ACTUAL	DROPPED MEMBERS ACTUAL (including transfers)
JULY/AUG/SEPT	152	195	134
OCT/NOV/DEC	205	308	300
JAN/FEB/MAR	195	259	115
APR/MAY/JUNE	112	497	374

GOALS AND ACTUAL NEW CLUBS CUMULATIVE



GOALS AND ACTUAL MEMBERS CUMULATIVE



DROPPED CLUBS: 13	
DROPPED MEMBERS	
DECEASED	21
CLUB CANCELLED	267
OTHER	634
TOTAL	922

116 CLUBS OF 154 ADDED 1 OR MORE NEW MEMBERS

[CLICK HERE FOR CUMULATIVE MEMBERSHIP DATA](#)

GENDER DISTRIBUTION	
MALE	2,479 (61.53%)
FEMALE	1,543 (38.30%)
NON BINARY	0 (0.00%)
PREFER NOT TO ANSWER	7 (0.17%)
TOTAL FAMILY UNIT MEMBERS	1,127
FAMILY MEMBERS PAYING HALF DUES	684