



# GAT MONTHLY MEMBERSHIP PROGRESS REPORT

Results as of: 6/30/2022

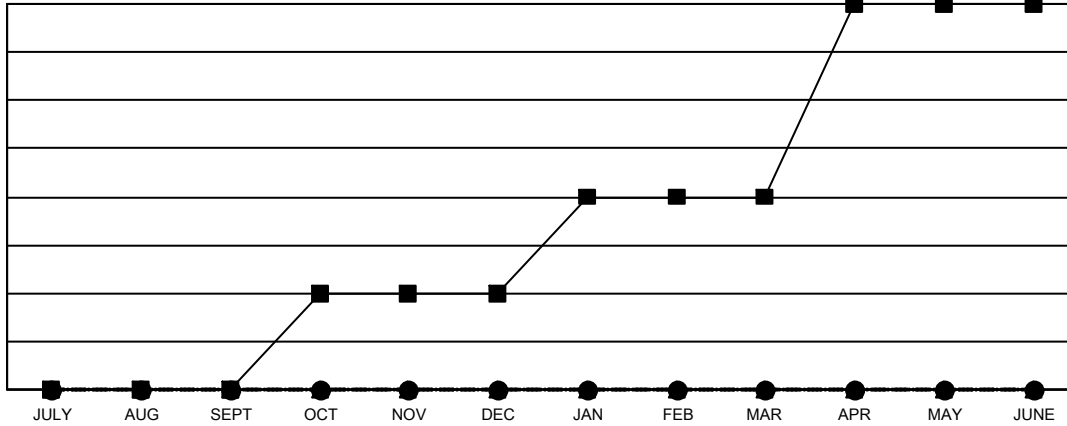
Multiple District 43

LOCATION: KENTUCKY

Clubs			
RESULTS FOR 2021-2022			
QUARTER	NEW CLUB GOAL	NEW CLUBS	DROPPED CLUBS
JULY/AUG/SEPT	0	0	1
OCT/NOV/DEC	1	0	1
JAN/FEB/MAR	1	0	1
APR/MAY/JUNE	2	0	3

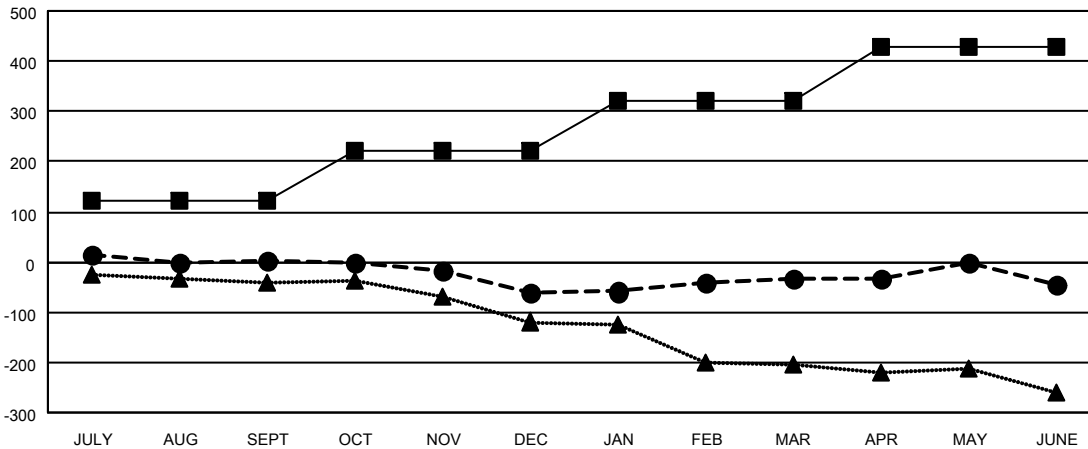
Members			
RESULTS FOR 2021-2022			
QUARTER	MEMBER GROWTH NET GOAL	MEMBER GROWTH ACTUAL	DROPPED MEMBERS ACTUAL (including transfers)
JULY/AUG/SEPT	122	115	104
OCT/NOV/DEC	100	77	131
JAN/FEB/MAR	100	121	75
APR/MAY/JUNE	105	160	157

GOALS AND ACTUAL NEW CLUBS CUMULATIVE



- CURRENT YEAR GOALS FOR NEW CLUBS
- CURRENT YEAR ACTUAL NEW CLUBS
- ▲- LAST YEAR ACTUAL NEW CLUBS

GOALS AND ACTUAL MEMBERS CUMULATIVE



- MEMBER GROWTH NET GOAL
- MEMBER GROWTH ACTUAL
- ▲- LAST YEAR MEMBERSHIP ACTUAL

<b>DROPPED CLUBS: 6</b>	88 CLUBS OF 153 ADDED 1 OR MORE NEW MEMBERS	<b>GENDER DISTRIBUTION</b>
<b>DROPPED MEMBERS</b>	<a href="#">CLICK HERE FOR CUMULATIVE MEMBERSHIP DATA</a>	MALE 2,407 (65.71%)
DECEASED 73		FEMALE 1,255 (34.26%)
CLUB CANCELLED 51		NON BINARY 0 (0.00%)
OTHER 343		PREFER NOT TO ANSWER 1 (0.03%)
<b>TOTAL 467</b>		<b>TOTAL FAMILY UNIT MEMBERS 753</b>
		<b>FAMILY MEMBERS PAYING HALF DUES 388</b>