



GAT MONTHLY MEMBERSHIP PROGRESS REPORT

Results as of: 6/30/2022

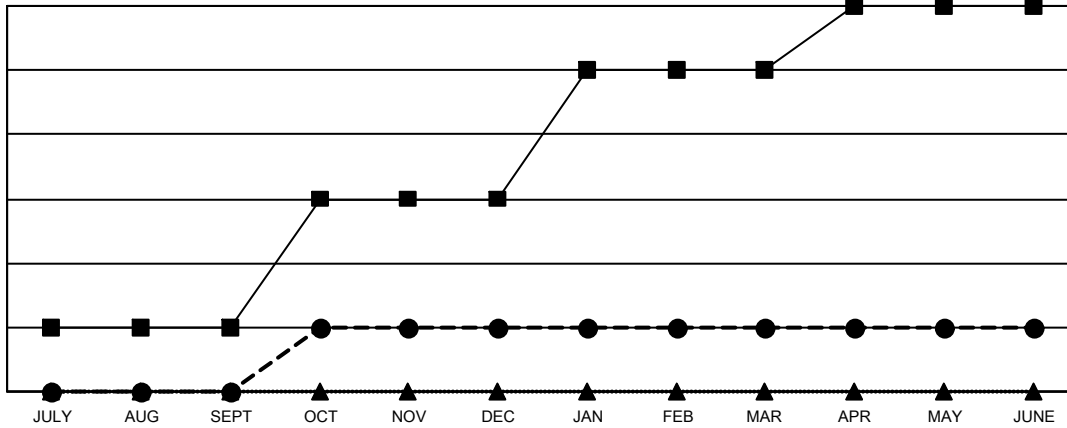
Multiple District 6

LOCATION: COLORADO

| Clubs | | | |
|-----------------------|---------------|-----------|---------------|
| RESULTS FOR 2021-2022 | | | |
| QUARTER | NEW CLUB GOAL | NEW CLUBS | DROPPED CLUBS |
| JULY/AUG/SEPT | 1 | 0 | 8 |
| OCT/NOV/DEC | 2 | 1 | 2 |
| JAN/FEB/MAR | 2 | 0 | 1 |
| APR/MAY/JUNE | 1 | 0 | 1 |

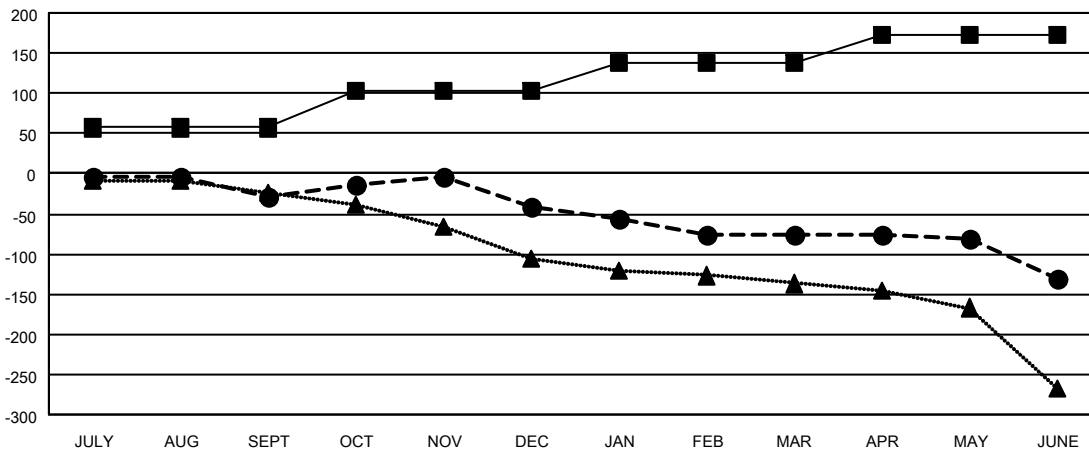
| Members | | | |
|-----------------------|------------------------|----------------------|--|
| RESULTS FOR 2021-2022 | | | |
| QUARTER | MEMBER GROWTH NET GOAL | MEMBER GROWTH ACTUAL | DROPPED MEMBERS ACTUAL (including transfers) |
| JULY/AUG/SEPT | 57 | 61 | 81 |
| OCT/NOV/DEC | 46 | 118 | 112 |
| JAN/FEB/MAR | 35 | 61 | 87 |
| APR/MAY/JUNE | 35 | 66 | 116 |

GOALS AND ACTUAL NEW CLUBS CUMULATIVE



- CURRENT YEAR GOALS FOR NEW CLUBS
- CURRENT YEAR ACTUAL NEW CLUBS
- ▲- LAST YEAR ACTUAL NEW CLUBS

GOALS AND ACTUAL MEMBERS CUMULATIVE



- MEMBER GROWTH NET GOAL
- MEMBER GROWTH ACTUAL
- ▲- LAST YEAR MEMBERSHIP ACTUAL

| | | |
|------------------------|---|--------------------------------------|
| DROPPED CLUBS: 12 | 60 CLUBS OF 122 ADDED 1 OR MORE NEW MEMBERS | GENDER DISTRIBUTION |
| DROPPED MEMBERS | CLICK HERE FOR CUMULATIVE MEMBERSHIP DATA | MALE 1,547 (61.17%) |
| DECEASED 54 | | FEMALE 982 (38.83%) |
| CLUB CANCELLED 44 | | NON BINARY 0 (0.00%) |
| OTHER 298 | | PREFER NOT TO ANSWER 0 (0.00%) |
| TOTAL 396 | | TOTAL FAMILY UNIT MEMBERS 589 |
| | | FAMILY MEMBERS PAYING HALF DUES 304 |