



GMT MONTHLY MEMBERSHIP PROGRESS REPORT

Results as of: 4/30/2026

Multiple District 11

LOCATION: MICHIGAN

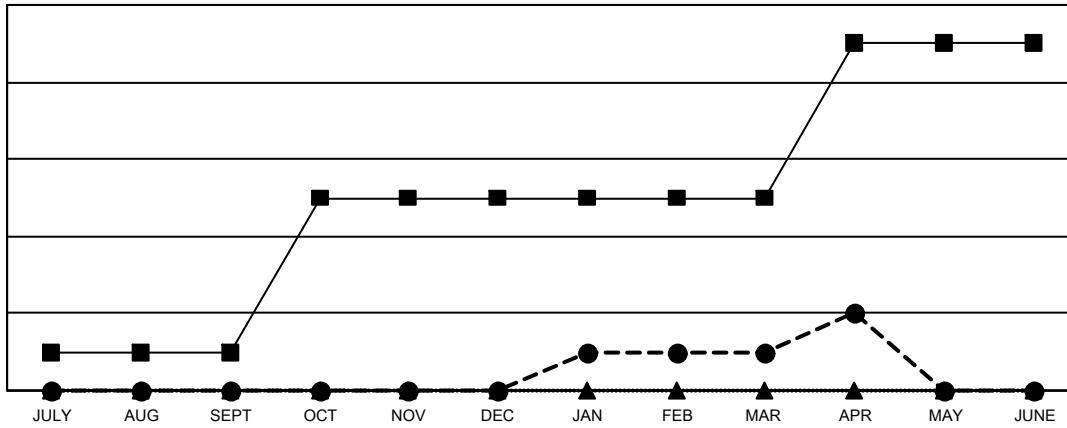
GMT: OPEN

GMT CA 1

Clubs			
RESULTS FOR 2025-2026			
QUARTER	NEW CLUB GOAL	NEW CLUBS	DROPPED CLUBS
JULY/AUG/SEPT	1	0	3
OCT/NOV/DEC	4	0	7
JAN/FEB/MAR	0	1	0
APR/MAY/JUNE	4	1	2

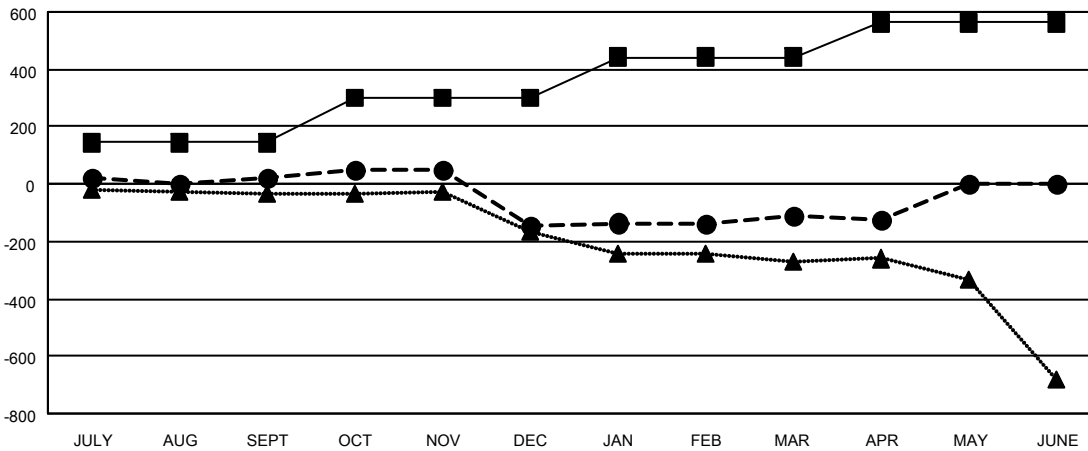
Members			
RESULTS FOR 2025-2026			
QUARTER	MEMBER GROWTH NET GOAL	MEMBER GROWTH ACTUAL	DROPPED MEMBERS ACTUAL (including transfers)
JULY/AUG/SEPT	144	222	167
OCT/NOV/DEC	156	241	372
JAN/FEB/MAR	143	276	215
APR/MAY/JUNE	119	97	86

GOALS AND ACTUAL NEW CLUBS CUMULATIVE



- - CURRENT YEAR GOALS FOR NEW CLUBS
- - CURRENT YEAR ACTUAL NEW CLUBS
- ▲ - LAST YEAR ACTUAL NEW CLUBS

GOALS AND ACTUAL MEMBERS CUMULATIVE



- - MEMBER GROWTH NET GOAL
- - MEMBER GROWTH ACTUAL
- ▲ - LAST YEAR MEMBERSHIP ACTUAL

DROPPED CLUBS: 12	170 CLUBS OF 326 ADDED 1 OR MORE NEW MEMBERS	GENDER DISTRIBUTION
		MALE 5,163 (63.09%)
		FEMALE 3,021 (36.91%)
DROPPED MEMBERS	CLICK HERE FOR CUMULATIVE MEMBERSHIP DATA	TOTAL FAMILY UNIT MEMBERS 1,705
DECEASED 126		FAMILY MEMBERS PAYING HALF DUES 867
CLUB CANCELLED 44		
OTHER 667		
TOTAL 837		