



GMT MONTHLY MEMBERSHIP PROGRESS REPORT

Results as of: 4/30/2026

Multiple District 14

LOCATION: PENNSYLVANIA

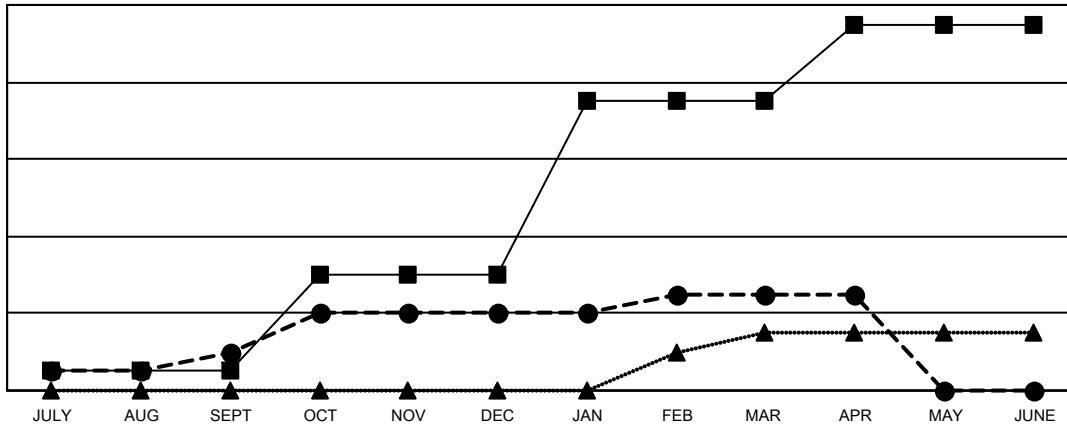
GMT: OPEN

GMT CA 1

Clubs			
RESULTS FOR 2025-2026			
QUARTER	NEW CLUB GOAL	NEW CLUBS	DROPPED CLUBS
JULY/AUG/SEPT	1	2	4
OCT/NOV/DEC	5	2	8
JAN/FEB/MAR	9	1	3
APR/MAY/JUNE	4	0	0

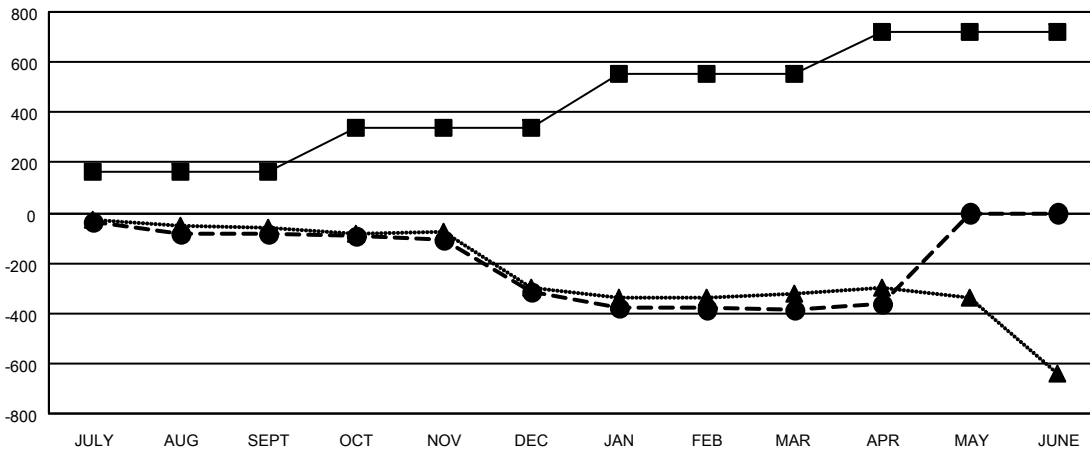
Members			
RESULTS FOR 2025-2026			
QUARTER	MEMBER GROWTH NET GOAL	MEMBER GROWTH ACTUAL	DROPPED MEMBERS ACTUAL (including transfers)
JULY/AUG/SEPT	161	332	359
OCT/NOV/DEC	179	309	513
JAN/FEB/MAR	215	339	367
APR/MAY/JUNE	163	104	76

GOALS AND ACTUAL NEW CLUBS CUMULATIVE



- - CURRENT YEAR GOALS FOR NEW CLUBS
- - CURRENT YEAR ACTUAL NEW CLUBS
- ▲ - LAST YEAR ACTUAL NEW CLUBS

GOALS AND ACTUAL MEMBERS CUMULATIVE



- - MEMBER GROWTH NET GOAL
- - MEMBER GROWTH ACTUAL
- ▲ - LAST YEAR MEMBERSHIP ACTUAL

DROPPED CLUBS: 15	
DROPPED MEMBERS	
DECEASED	256
CLUB CANCELLED	125
OTHER	932
TOTAL	1,313

317 CLUBS OF 590 ADDED 1 OR MORE NEW MEMBERS

GENDER DISTRIBUTION	
MALE	9,921 (66.13%)
FEMALE	5,081 (33.87%)

[CLICK HERE FOR CUMULATIVE MEMBERSHIP DATA](#)

TOTAL FAMILY UNIT MEMBERS	3,043
FAMILY MEMBERS PAYING HALF DUES	1,587