



# GMT MONTHLY MEMBERSHIP PROGRESS REPORT

Results as of: 4/30/2026

Multiple District 17

LOCATION: KANSAS

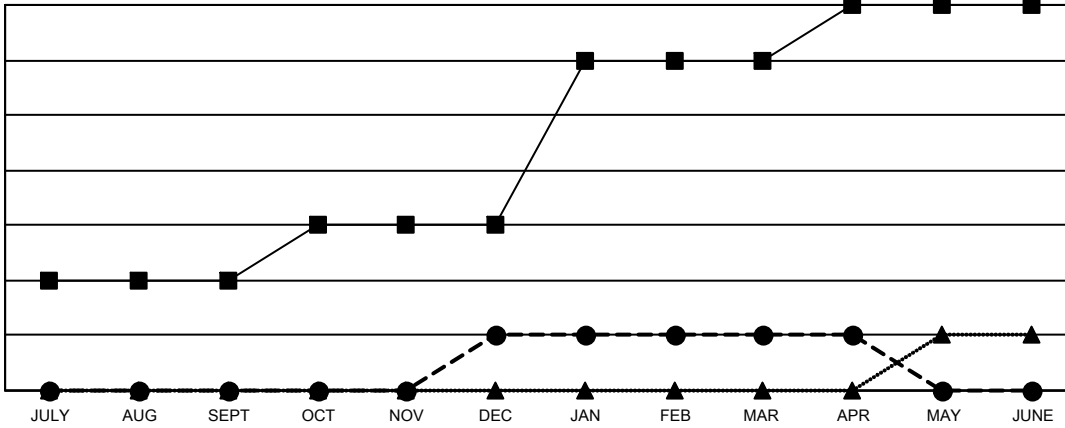
GMT: OPEN

GMT CA 1

Clubs			
RESULTS FOR 2025-2026			
QUARTER	NEW CLUB GOAL	NEW CLUBS	DROPPED CLUBS
JULY/AUG/SEPT	2	0	1
OCT/NOV/DEC	1	1	3
JAN/FEB/MAR	3	0	2
APR/MAY/JUNE	1	0	0

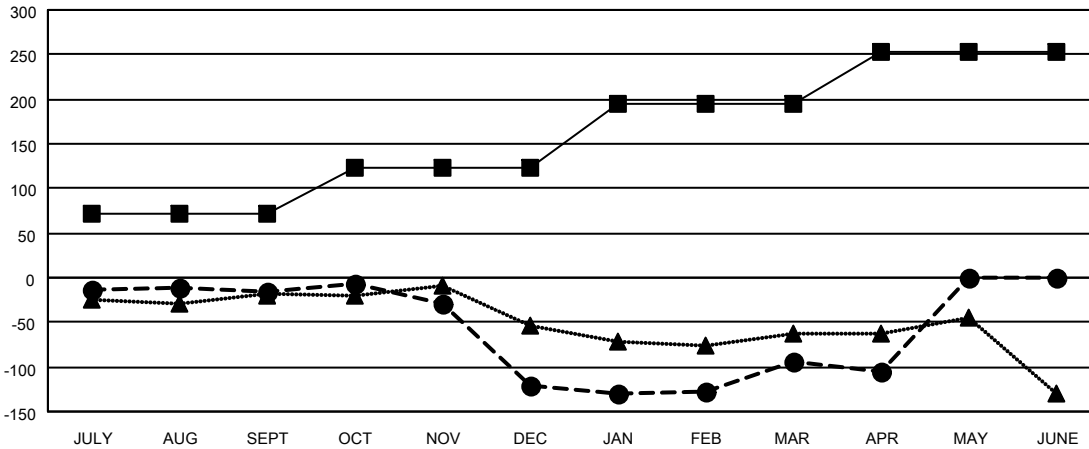
Members			
RESULTS FOR 2025-2026			
QUARTER	MEMBER GROWTH NET GOAL	MEMBER GROWTH ACTUAL	DROPPED MEMBERS ACTUAL (including transfers)
JULY/AUG/SEPT	71	74	85
OCT/NOV/DEC	52	110	205
JAN/FEB/MAR	71	106	67
APR/MAY/JUNE	60	26	34

GOALS AND ACTUAL NEW CLUBS CUMULATIVE



- - CURRENT YEAR GOALS FOR NEW CLUBS
- - CURRENT YEAR ACTUAL NEW CLUBS
- ▲ - LAST YEAR ACTUAL NEW CLUBS

GOALS AND ACTUAL MEMBERS CUMULATIVE



- - MEMBER GROWTH NET GOAL
- - MEMBER GROWTH ACTUAL
- ▲ - LAST YEAR MEMBERSHIP ACTUAL

DROPPED CLUBS: 6	
<b>DROPPED MEMBERS</b>	
DECEASED	50
CLUB CANCELLED	10
OTHER	331
<b>TOTAL</b>	<b>391</b>

86 CLUBS OF 200 ADDED 1 OR MORE NEW MEMBERS

[CLICK HERE FOR CUMULATIVE MEMBERSHIP DATA](#)

<b>GENDER DISTRIBUTION</b>	
MALE	2,499 (66.20%)
FEMALE	1,276 (33.80%)
TOTAL FAMILY UNIT MEMBERS	832
FAMILY MEMBERS PAYING HALF DUES	423