



GMT MONTHLY MEMBERSHIP PROGRESS REPORT

Results as of: 4/30/2026

Multiple District 22

LOCATION: MARYLAND

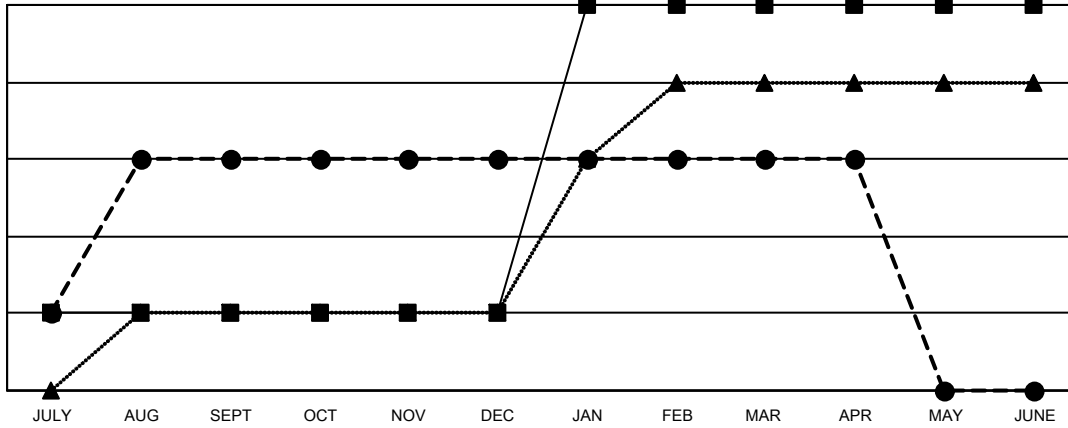
GMT: OPEN

GMT CA 1

Clubs			
RESULTS FOR 2025-2026			
QUARTER	NEW CLUB GOAL	NEW CLUBS	DROPPED CLUBS
JULY/AUG/SEPT	1	3	1
OCT/NOV/DEC	0	0	2
JAN/FEB/MAR	4	0	0
APR/MAY/JUNE	0	0	0

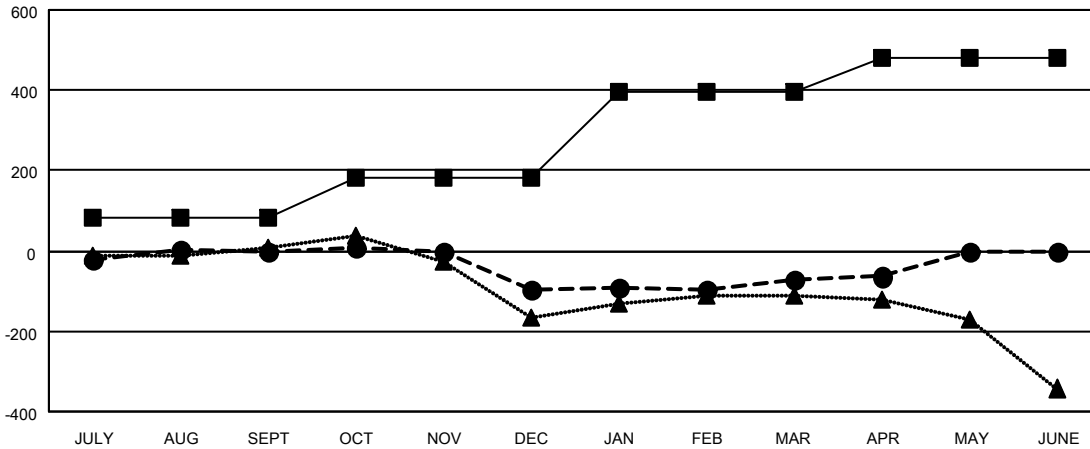
Members			
RESULTS FOR 2025-2026			
QUARTER	MEMBER GROWTH NET GOAL	MEMBER GROWTH ACTUAL	DROPPED MEMBERS ACTUAL (including transfers)
JULY/AUG/SEPT	81	267	198
OCT/NOV/DEC	102	109	193
JAN/FEB/MAR	212	142	88
APR/MAY/JUNE	87	46	33

GOALS AND ACTUAL NEW CLUBS CUMULATIVE



- - CURRENT YEAR GOALS FOR NEW CLUBS
- - CURRENT YEAR ACTUAL NEW CLUBS
- ▲ - LAST YEAR ACTUAL NEW CLUBS

GOALS AND ACTUAL MEMBERS CUMULATIVE



- - MEMBER GROWTH NET GOAL
- - MEMBER GROWTH ACTUAL
- ▲ - LAST YEAR MEMBERSHIP ACTUAL

DROPPED CLUBS: 3	104 CLUBS OF 194 ADDED 1 OR MORE NEW MEMBERS	GENDER DISTRIBUTION
		MALE 3,327 (59.82%)
		FEMALE 2,235 (40.18%)
DROPPED MEMBERS	CLICK HERE FOR CUMULATIVE MEMBERSHIP DATA	TOTAL FAMILY UNIT MEMBERS 1,112
DECEASED 84		FAMILY MEMBERS PAYING HALF DUES 579
CLUB CANCELLED 28		
OTHER 398		
TOTAL 510		