



# GMT MONTHLY MEMBERSHIP PROGRESS REPORT

Results as of: 4/30/2026

Multiple District 30

LOCATION: MISSISSIPPI

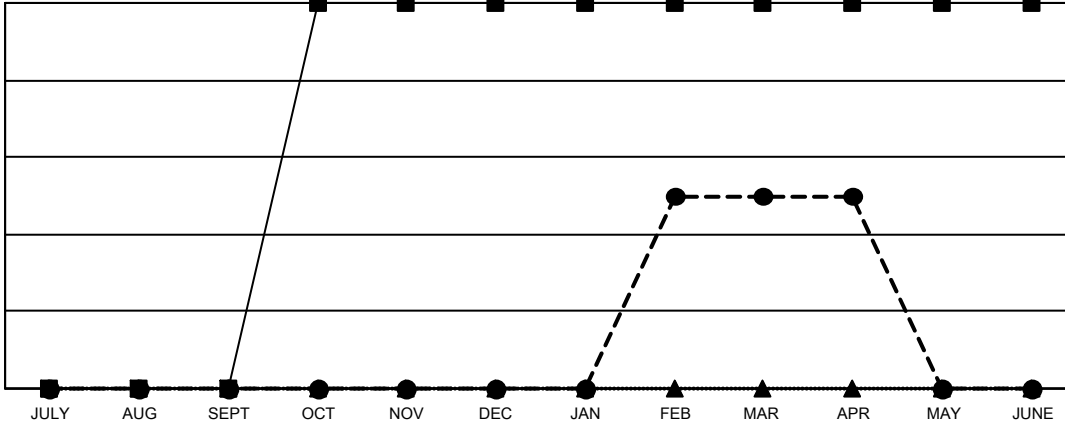
GMT: OPEN

GMT CA 1

Clubs			
RESULTS FOR 2025-2026			
QUARTER	NEW CLUB GOAL	NEW CLUBS	DROPPED CLUBS
JULY/AUG/SEPT	0	0	1
OCT/NOV/DEC	2	0	3
JAN/FEB/MAR	0	1	0
APR/MAY/JUNE	0	0	0

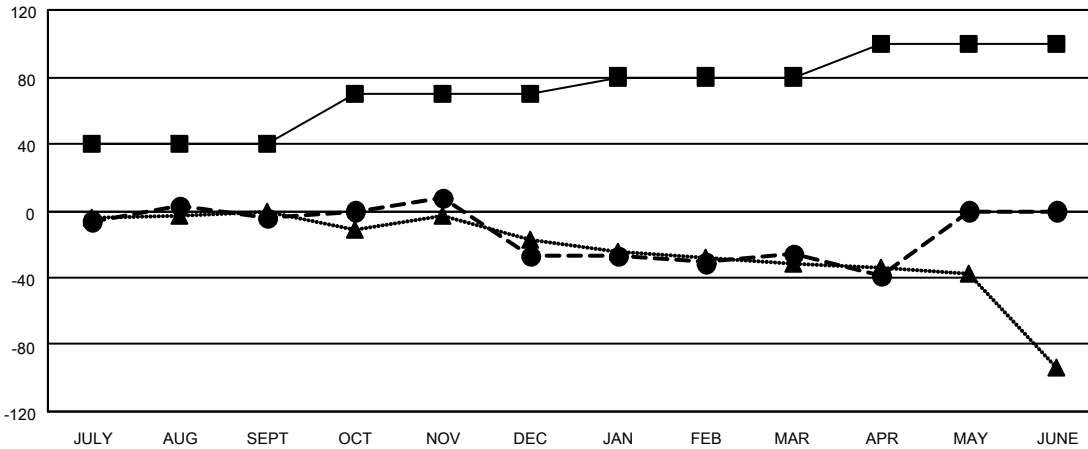
Members			
RESULTS FOR 2025-2026			
QUARTER	MEMBER GROWTH NET GOAL	MEMBER GROWTH ACTUAL	DROPPED MEMBERS ACTUAL (including transfers)
JULY/AUG/SEPT	40	60	54
OCT/NOV/DEC	30	44	55
JAN/FEB/MAR	10	59	54
APR/MAY/JUNE	20	19	32

GOALS AND ACTUAL NEW CLUBS CUMULATIVE



- - CURRENT YEAR GOALS FOR NEW CLUBS
- - CURRENT YEAR ACTUAL NEW CLUBS
- ▲ - LAST YEAR ACTUAL NEW CLUBS

GOALS AND ACTUAL MEMBERS CUMULATIVE



- - MEMBER GROWTH NET GOAL
- - MEMBER GROWTH ACTUAL
- ▲ - LAST YEAR MEMBERSHIP ACTUAL

DROPPED CLUBS: 4	48 CLUBS OF 80 ADDED 1 OR MORE NEW MEMBERS	<b>GENDER DISTRIBUTION</b> MALE 985 (68.69%) FEMALE 449 (31.31%)
<b>DROPPED MEMBERS</b> DECEASED 21 CLUB CANCELLED 18 OTHER 156 TOTAL 195	<a href="#">CLICK HERE FOR CUMULATIVE MEMBERSHIP DATA</a>	TOTAL FAMILY UNIT MEMBERS 205 FAMILY MEMBERS PAYING HALF DUES 105