



GMT MONTHLY MEMBERSHIP PROGRESS REPORT

Results as of: 4/30/2026

Multiple District 33

LOCATION: MASSACHUSETTS

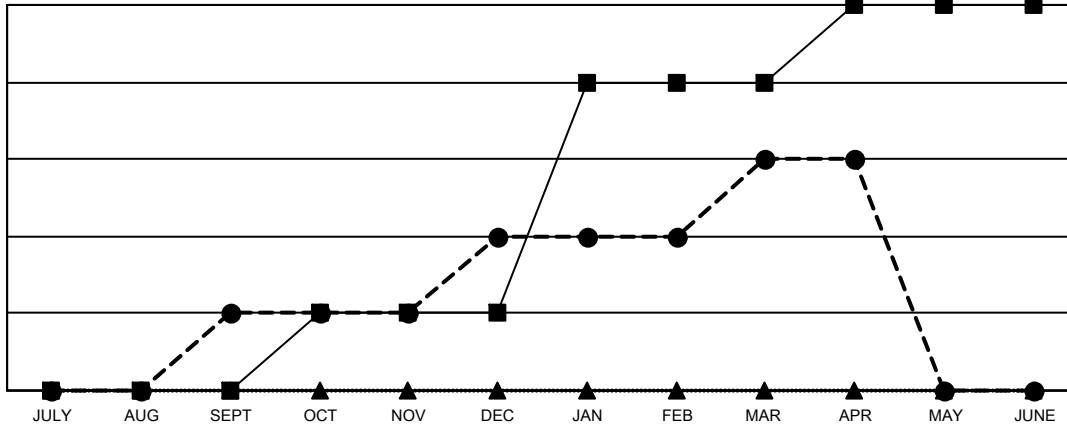
GMT: OPEN

GMT CA 1

Clubs			
RESULTS FOR 2025-2026			
QUARTER	NEW CLUB GOAL	NEW CLUBS	DROPPED CLUBS
JULY/AUG/SEPT	0	1	1
OCT/NOV/DEC	1	1	1
JAN/FEB/MAR	3	1	0
APR/MAY/JUNE	1	0	1

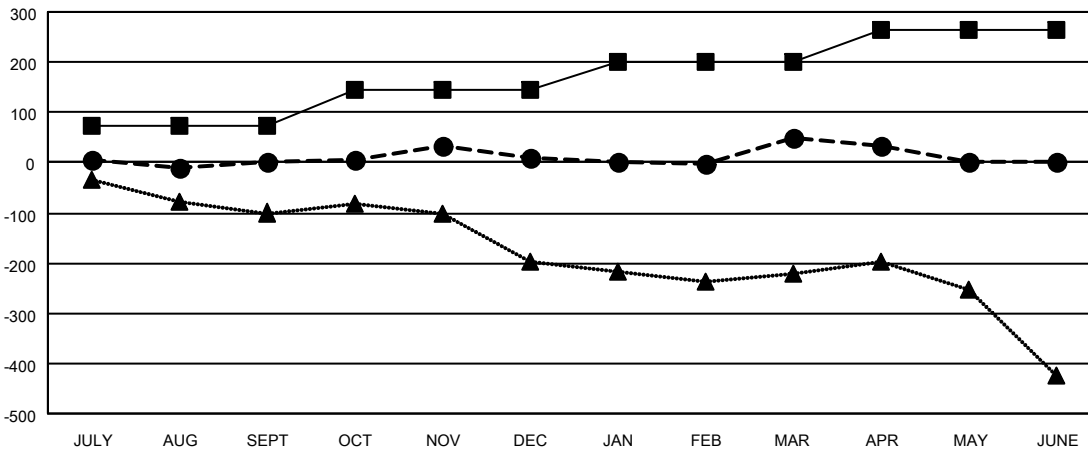
Members			
RESULTS FOR 2025-2026			
QUARTER	MEMBER GROWTH NET GOAL	MEMBER GROWTH ACTUAL	DROPPED MEMBERS ACTUAL (including transfers)
JULY/AUG/SEPT	72	134	124
OCT/NOV/DEC	73	163	144
JAN/FEB/MAR	54	137	82
APR/MAY/JUNE	64	72	64

GOALS AND ACTUAL NEW CLUBS CUMULATIVE



- - CURRENT YEAR GOALS FOR NEW CLUBS
- - CURRENT YEAR ACTUAL NEW CLUBS
- ▲ - LAST YEAR ACTUAL NEW CLUBS

GOALS AND ACTUAL MEMBERS CUMULATIVE



- - MEMBER GROWTH NET GOAL
- - MEMBER GROWTH ACTUAL
- ▲ - LAST YEAR MEMBERSHIP ACTUAL

DROPPED CLUBS: 3	109 CLUBS OF 207 ADDED 1 OR MORE NEW MEMBERS	GENDER DISTRIBUTION
		MALE 3,487 (60.15%)
		FEMALE 2,310 (39.85%)
DROPPED MEMBERS	CLICK HERE FOR CUMULATIVE MEMBERSHIP DATA	TOTAL FAMILY UNIT MEMBERS 902
DECEASED 67		FAMILY MEMBERS PAYING HALF DUES 463
CLUB CANCELLED 22		
OTHER 325		
TOTAL 414		