



GMT MONTHLY MEMBERSHIP PROGRESS REPORT

Results as of: 4/30/2026

Multiple District 9

LOCATION: IOWA

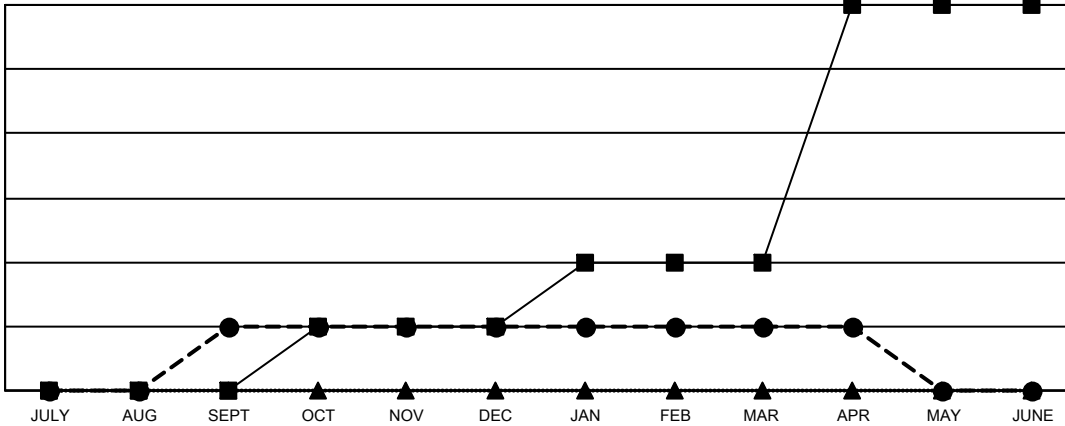
GMT: OPEN

GMT CA 1

Clubs			
RESULTS FOR 2025-2026			
QUARTER	NEW CLUB GOAL	NEW CLUBS	DROPPED CLUBS
JULY/AUG/SEPT	0	1	0
OCT/NOV/DEC	1	0	1
JAN/FEB/MAR	1	0	0
APR/MAY/JUNE	4	0	0

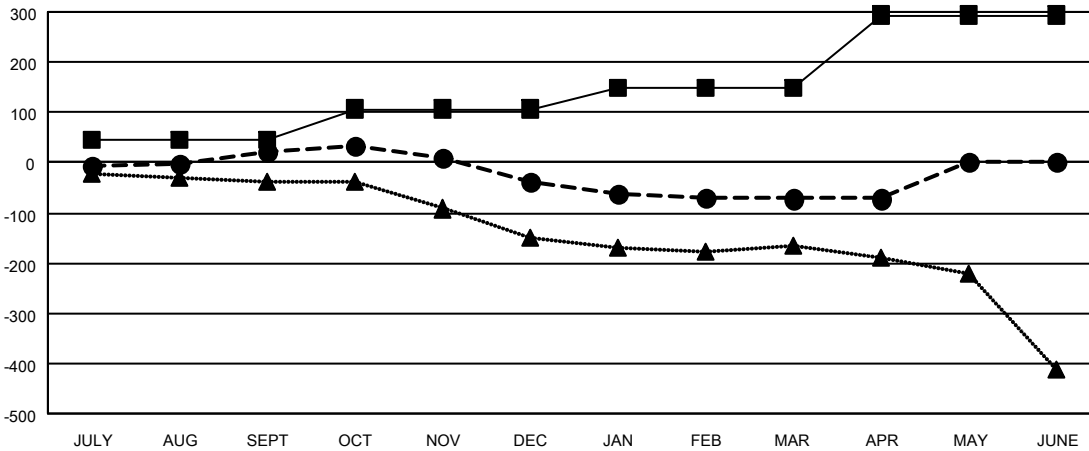
Members			
RESULTS FOR 2025-2026			
QUARTER	MEMBER GROWTH NET GOAL	MEMBER GROWTH ACTUAL	DROPPED MEMBERS ACTUAL (including transfers)
JULY/AUG/SEPT	44	191	122
OCT/NOV/DEC	63	114	165
JAN/FEB/MAR	43	84	110
APR/MAY/JUNE	144	32	31

GOALS AND ACTUAL NEW CLUBS CUMULATIVE



- - CURRENT YEAR GOALS FOR NEW CLUBS
- - CURRENT YEAR ACTUAL NEW CLUBS
- ▲ - LAST YEAR ACTUAL NEW CLUBS

GOALS AND ACTUAL MEMBERS CUMULATIVE



- - MEMBER GROWTH NET GOAL
- - MEMBER GROWTH ACTUAL
- ▲ - LAST YEAR MEMBERSHIP ACTUAL

DROPPED CLUBS: 1	123 CLUBS OF 261 ADDED 1 OR MORE NEW MEMBERS	GENDER DISTRIBUTION
		MALE 4,233 (70.23%)
		FEMALE 1,794 (29.77%)
DROPPED MEMBERS	CLICK HERE FOR CUMULATIVE MEMBERSHIP DATA	TOTAL FAMILY UNIT MEMBERS 1,301
DECEASED 79		FAMILY MEMBERS PAYING HALF DUES 664
CLUB CANCELLED 12		
OTHER 336		
TOTAL 427		