



GMT MONTHLY MEMBERSHIP PROGRESS REPORT

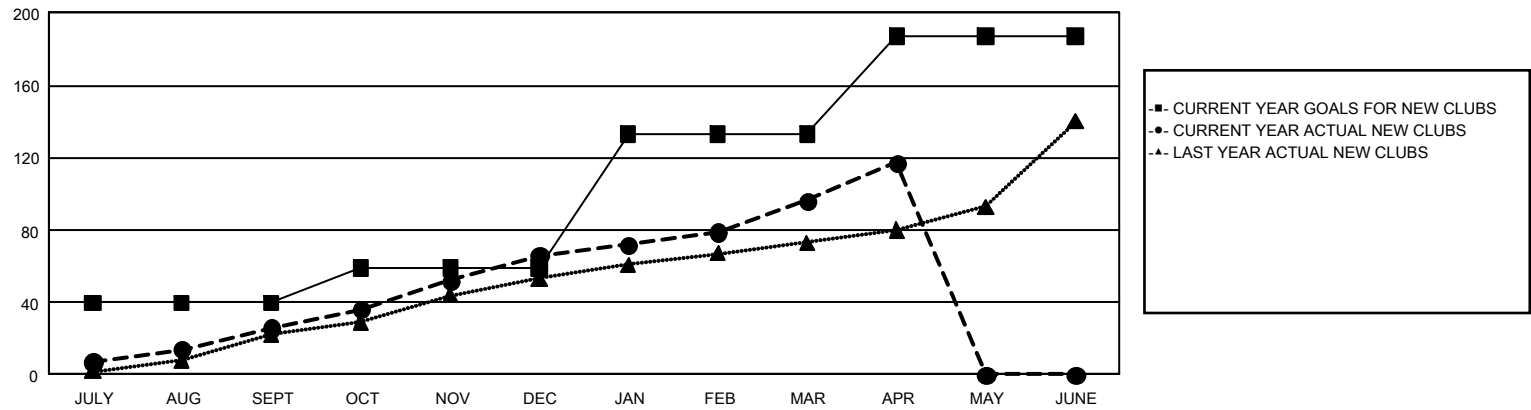
GAT Constitutional Area 3

Results as of: 4/30/2025

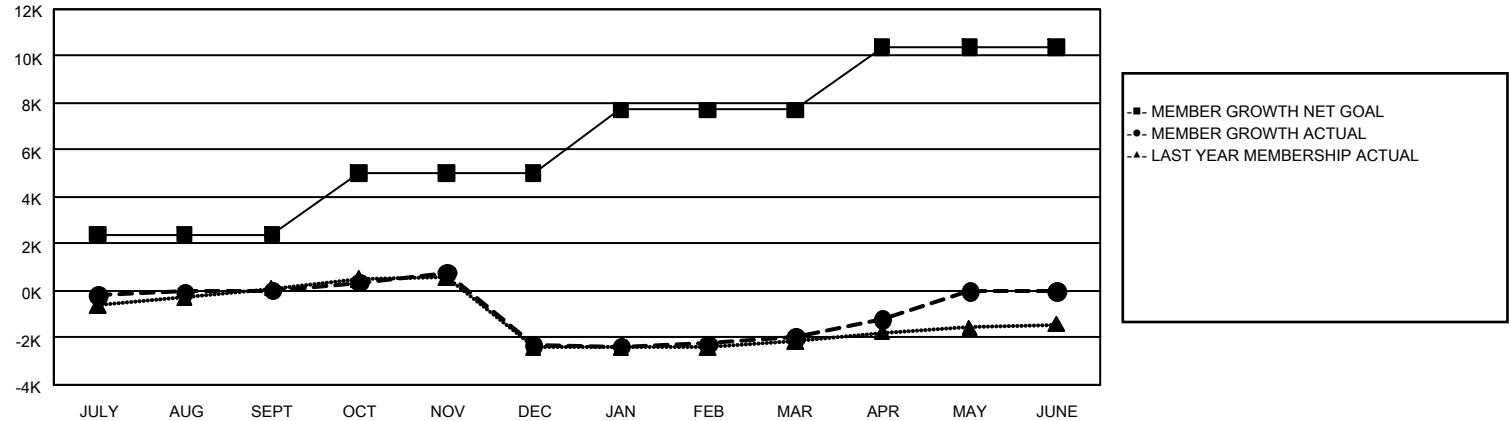
REPORT DOES NOT INCLUDE CLUBS IN UNDISTRICTED AREAS.

Clubs				Members			
RESULTS FOR 2024-2025				RESULTS FOR 2024-2025			
QUARTER	NEW CLUB GOAL	NEW CLUBS	DROPPED CLUBS	QUARTER	MEMBER GROWTH NET GOAL	MEMBER GROWTH ACTUAL	DROPPED MEMBERS ACTUAL (including transfers)
JULY/AUG/SEPT	40	26	39	JULY/AUG/SEPT	2,394	3,314	2,771
OCT/NOV/DEC	19	40	69	OCT/NOV/DEC	2,611	4,411	6,182
JAN/FEB/MAR	74	30	24	JAN/FEB/MAR	2,708	3,471	2,436
APR/MAY/JUNE	54	21	2	APR/MAY/JUNE	2,654	1,848	875

GOALS AND ACTUAL NEW CLUBS CUMULATIVE



GOALS AND ACTUAL MEMBERS CUMULATIVE



DROPPED CLUBS: 133		2,185 CLUBS OF 4,345 ADDED 1 OR MORE NEW MEMBERS	<u>GENDER DISTRIBUTION</u>	
			MALE	47,609 (46.34%)
			FEMALE	55,070 (53.61%)
<u>DROPPED MEMBERS</u>		CLICK HERE FOR CUMULATIVE MEMBERSHIP DATA		
DECEASED	611		TOTAL FAMILY UNIT MEMBERS 0	
CLUB CANCELLED	1,955			
OTHER	9,607		FAMILY MEMBERS PAYING HALF DUES 0	
TOTAL	12,173			