



GMT MONTHLY MEMBERSHIP PROGRESS REPORT

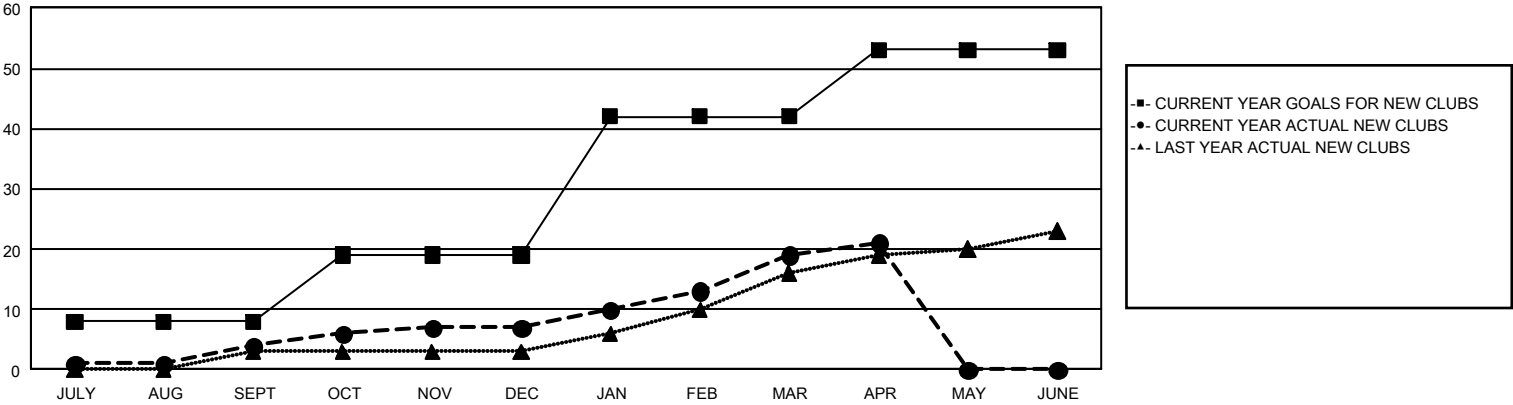
GAT Constitutional Area 5 - Japan

Results as of: 4/30/2025

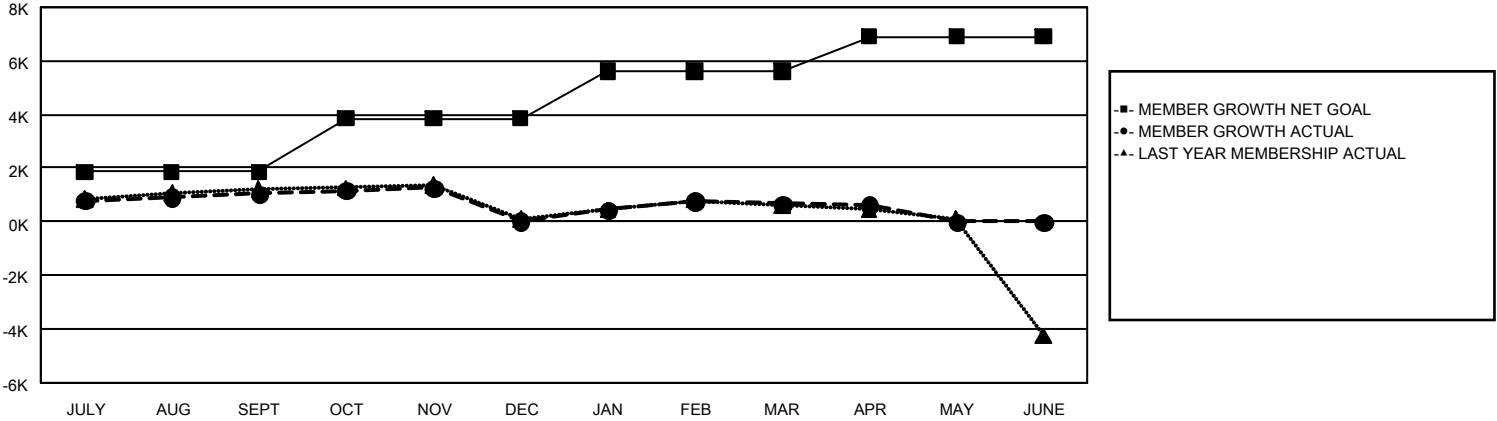
REPORT DOES NOT INCLUDE CLUBS IN UNDISTRICTED AREAS.

Clubs				Members			
RESULTS FOR 2024-2025				RESULTS FOR 2024-2025			
QUARTER	NEW CLUB GOAL	NEW CLUBS	DROPPED CLUBS	QUARTER	MEMBER GROWTH NET GOAL	MEMBER GROWTH ACTUAL	DROPPED MEMBERS ACTUAL (including transfers)
JULY/AUG/SEPT	8	4	3	JULY/AUG/SEPT	1,850	2,829	1,555
OCT/NOV/DEC	11	3	11	OCT/NOV/DEC	1,994	1,433	2,334
JAN/FEB/MAR	23	12	6	JAN/FEB/MAR	1,787	2,186	1,406
APR/MAY/JUNE	11	2	0	APR/MAY/JUNE	1,271	638	640

GOALS AND ACTUAL NEW CLUBS CUMULATIVE



GOALS AND ACTUAL MEMBERS CUMULATIVE



DROPPED CLUBS: 20		1,812 CLUBS OF 2,722 ADDED 1 OR MORE NEW MEMBERS	<u>GENDER DISTRIBUTION</u>		
			MALE	72,403 (77.39%)	
			FEMALE	21,132 (22.59%)	
<u>DROPPED MEMBERS</u>		CLICK HERE FOR CUMULATIVE MEMBERSHIP DATA	TOTAL FAMILY UNIT MEMBERS		0
DECEASED	653				
CLUB CANCELLED	68				
OTHER	5,079				
TOTAL	5,800				
			FAMILY MEMBERS PAYING HALF DUES		0