



GMT MONTHLY MEMBERSHIP PROGRESS REPORT

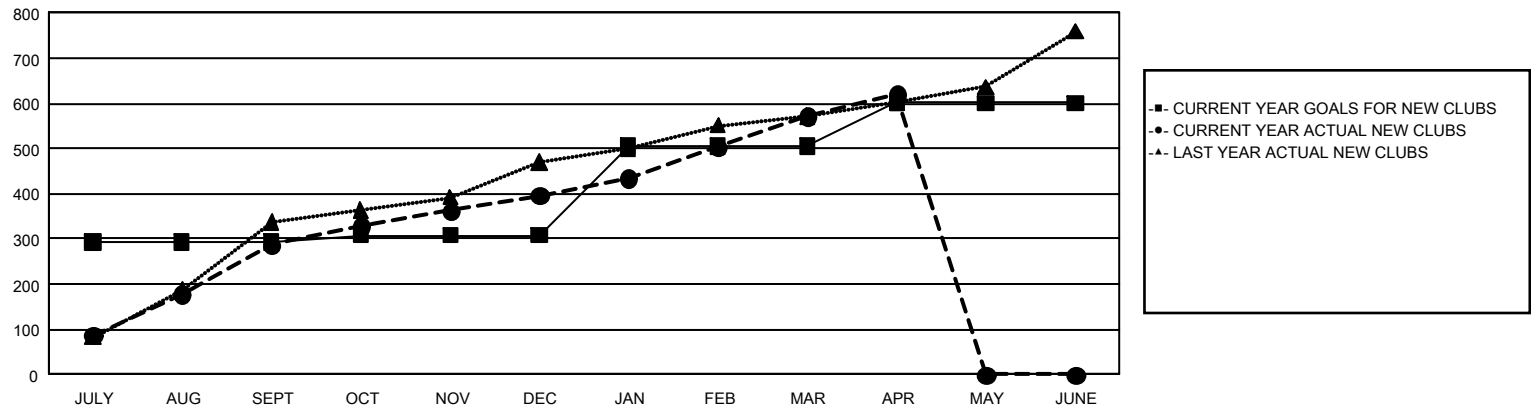
GAT Constitutional Area 6 - India

Results as of: 4/30/2025

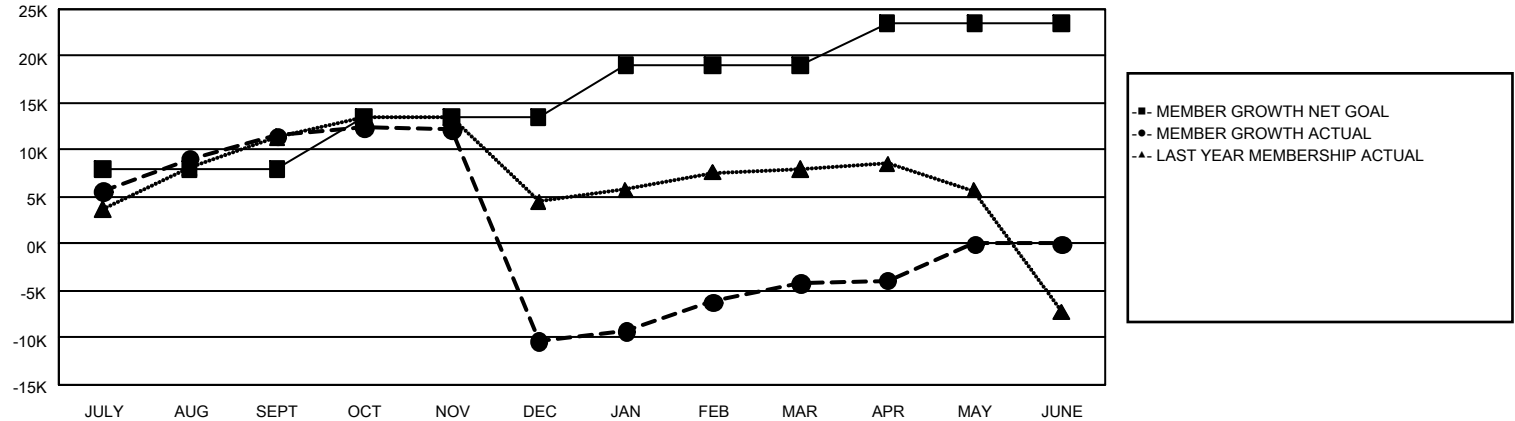
REPORT DOES NOT INCLUDE CLUBS IN UNDISTRICTED AREAS.

Clubs				Members			
RESULTS FOR 2024-2025				RESULTS FOR 2024-2025			
QUARTER	NEW CLUB GOAL	NEW CLUBS	DROPPED CLUBS	QUARTER	MEMBER GROWTH NET GOAL	MEMBER GROWTH ACTUAL	DROPPED MEMBERS ACTUAL (including transfers)
JULY/AUG/SEPT	293	287	72	JULY/AUG/SEPT	7,909	19,759	6,700
OCT/NOV/DEC	15	109	756	OCT/NOV/DEC	5,600	8,867	29,273
JAN/FEB/MAR	198	176	120	JAN/FEB/MAR	5,576	15,903	5,750
APR/MAY/JUNE	95	48	2	APR/MAY/JUNE	4,411	3,462	2,410

GOALS AND ACTUAL NEW CLUBS CUMULATIVE



GOALS AND ACTUAL MEMBERS CUMULATIVE



DROPPED CLUBS: 950		5,032 CLUBS OF 9,298 ADDED 1 OR MORE NEW MEMBERS	<u>GENDER DISTRIBUTION</u>	
			MALE	207,027 (73.87%)
			FEMALE	73,172 (26.11%)
<u>DROPPED MEMBERS</u>		CLICK HERE FOR CUMULATIVE MEMBERSHIP DATA		
DECEASED	704		TOTAL FAMILY UNIT MEMBERS 0	
CLUB CANCELLED	17,844			
OTHER	25,445		FAMILY MEMBERS PAYING HALF DUES 0	
TOTAL	43,993			