



# GMT MONTHLY MEMBERSHIP PROGRESS REPORT

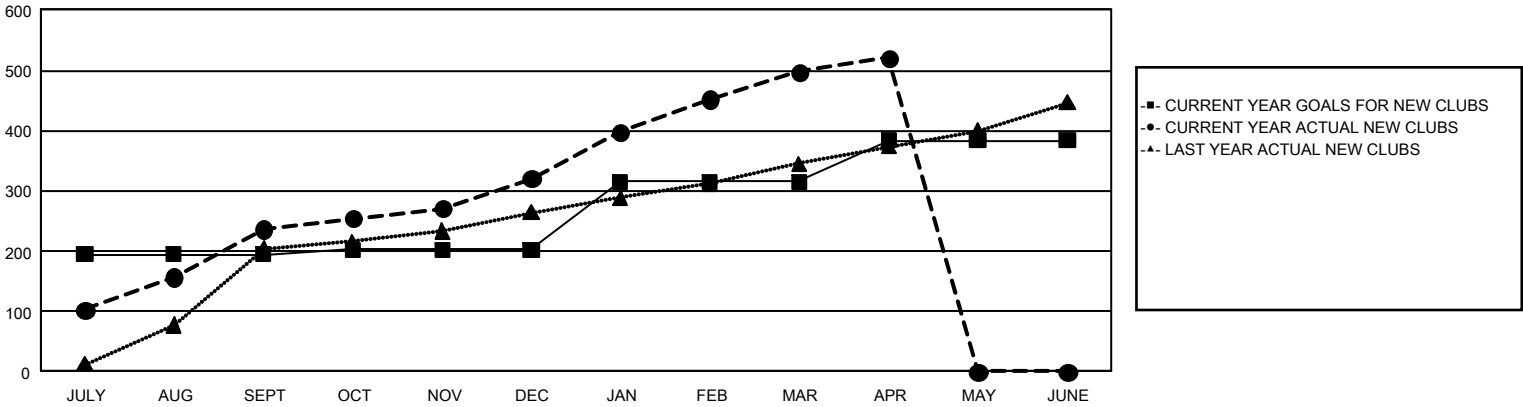
## GAT Constitutional Area 6 - South Asia and Middle East

Results as of: 4/30/2025

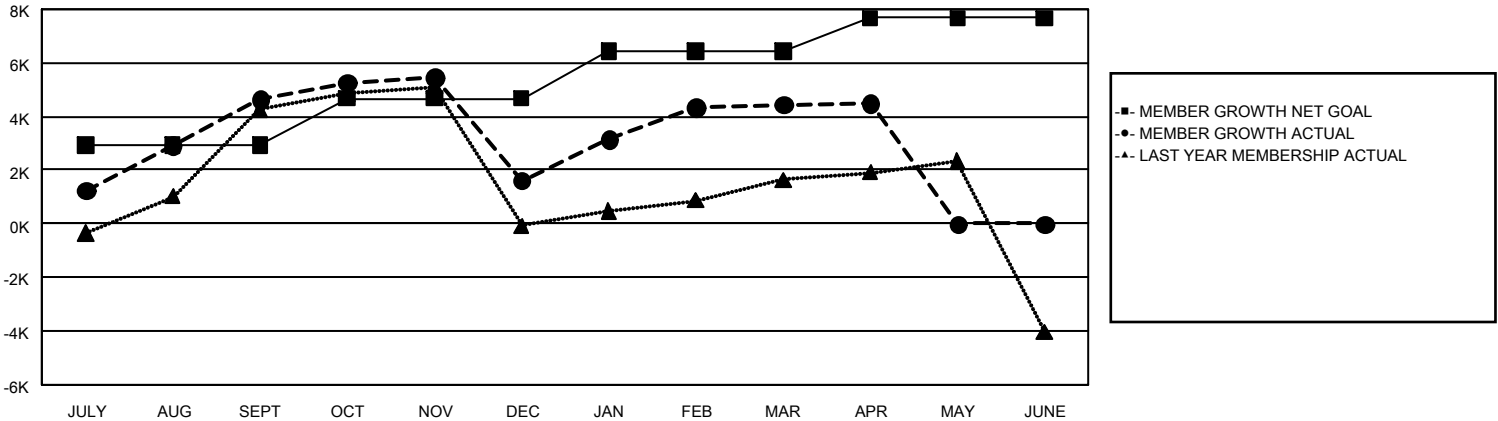
REPORT DOES NOT INCLUDE CLUBS IN UNDISTRICTED AREAS.

Clubs				Members			
RESULTS FOR 2024-2025				RESULTS FOR 2024-2025			
QUARTER	NEW CLUB GOAL	NEW CLUBS	DROPPED CLUBS	QUARTER	MEMBER GROWTH NET GOAL	MEMBER GROWTH ACTUAL	DROPPED MEMBERS ACTUAL (including transfers)
JULY/AUG/SEPT	195	237	57	JULY/AUG/SEPT	2,933	9,801	3,934
OCT/NOV/DEC	7	84	148	OCT/NOV/DEC	1,737	5,324	7,718
JAN/FEB/MAR	113	176	66	JAN/FEB/MAR	1,772	6,785	2,949
APR/MAY/JUNE	68	24	7	APR/MAY/JUNE	1,228	1,142	908

GOALS AND ACTUAL NEW CLUBS CUMULATIVE



GOALS AND ACTUAL MEMBERS CUMULATIVE



DROPPED CLUBS: 277		2,283 CLUBS OF 4,352 ADDED 1 OR MORE NEW MEMBERS	<u>GENDER DISTRIBUTION</u>	
			MALE	68,839 (71.73%)
			FEMALE	27,062 (28.20%)
<u>DROPPED MEMBERS</u>		<a href="#">CLICK HERE FOR CUMULATIVE MEMBERSHIP DATA</a>		
DECEASED	96		TOTAL FAMILY UNIT MEMBERS	
CLUB CANCELLED	4,813		0	
OTHER	10,524		FAMILY MEMBERS PAYING HALF DUES	
TOTAL	15,433		0	