



GAT MONTHLY MEMBERSHIP PROGRESS REPORT

Results as of: 6/30/2022

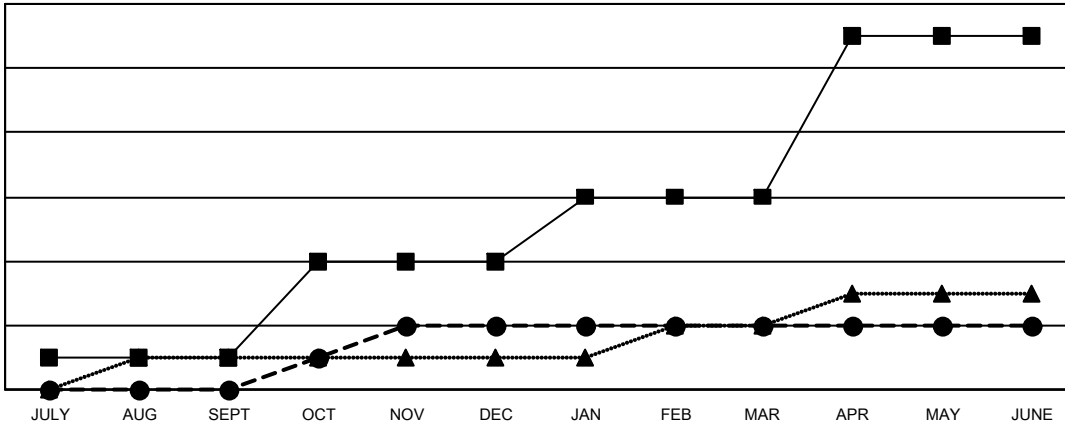
Multiple District 105

LOCATION: ENGLAND

| Clubs | | | |
|-----------------------|---------------|-----------|---------------|
| RESULTS FOR 2021-2022 | | | |
| QUARTER | NEW CLUB GOAL | NEW CLUBS | DROPPED CLUBS |
| JULY/AUG/SEPT | 1 | 0 | 6 |
| OCT/NOV/DEC | 3 | 2 | 6 |
| JAN/FEB/MAR | 2 | 0 | 5 |
| APR/MAY/JUNE | 5 | 0 | 5 |

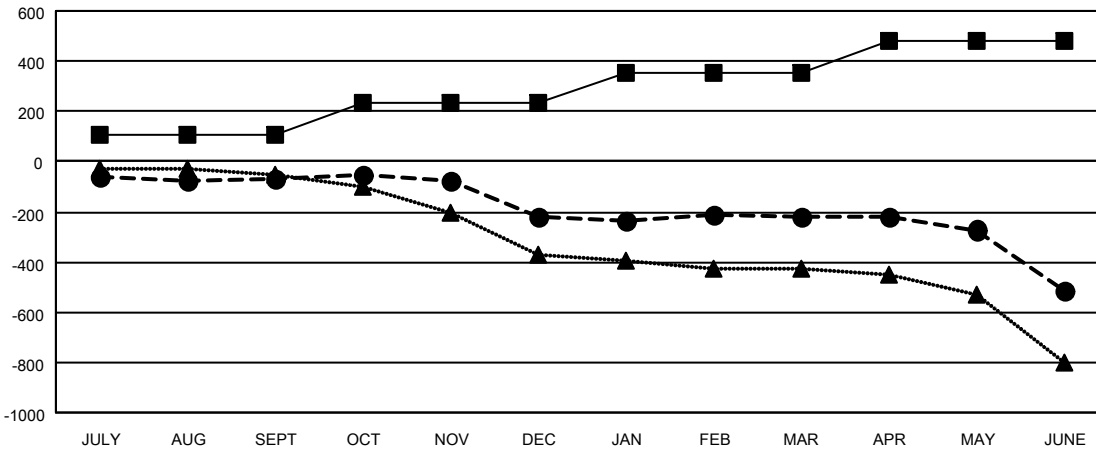
| Members | | | |
|-----------------------|------------------------|----------------------|--|
| RESULTS FOR 2021-2022 | | | |
| QUARTER | MEMBER GROWTH NET GOAL | MEMBER GROWTH ACTUAL | DROPPED MEMBERS ACTUAL (including transfers) |
| JULY/AUG/SEPT | 104 | 217 | 248 |
| OCT/NOV/DEC | 129 | 345 | 449 |
| JAN/FEB/MAR | 122 | 274 | 237 |
| APR/MAY/JUNE | 127 | 269 | 535 |

GOALS AND ACTUAL NEW CLUBS CUMULATIVE



- CURRENT YEAR GOALS FOR NEW CLUBS
- CURRENT YEAR ACTUAL NEW CLUBS
- ▲- LAST YEAR ACTUAL NEW CLUBS

GOALS AND ACTUAL MEMBERS CUMULATIVE



- MEMBER GROWTH NET GOAL
- MEMBER GROWTH ACTUAL
- ▲- LAST YEAR MEMBERSHIP ACTUAL

| | | |
|------------------------|---|-------------------------------------|
| DROPPED CLUBS: 22 | 340 CLUBS OF 595 ADDED 1 OR MORE NEW MEMBERS | GENDER DISTRIBUTION |
| DROPPED MEMBERS | CLICK HERE FOR CUMULATIVE MEMBERSHIP DATA | MALE 7,002 (70.68%) |
| DECEASED 171 | | FEMALE 2,904 (29.31%) |
| CLUB CANCELLED 24 | | NON BINARY 1 (0.01%) |
| OTHER 1,274 | | PREFER NOT TO ANSWER 0 (0.00%) |
| TOTAL 1,469 | | TOTAL FAMILY UNIT MEMBERS 1,314 |
| | | FAMILY MEMBERS PAYING HALF DUES 669 |