



GAT MONTHLY MEMBERSHIP PROGRESS REPORT

Results as of: 6/30/2022

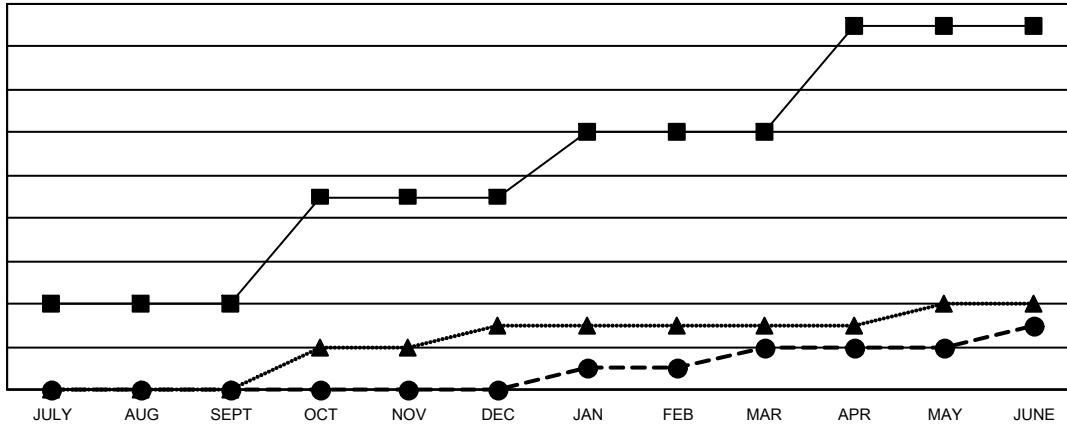
Multiple District 13

LOCATION: OHIO

Clubs			
RESULTS FOR 2021-2022			
QUARTER	NEW CLUB GOAL	NEW CLUBS	DROPPED CLUBS
JULY/AUG/SEPT	4	0	3
OCT/NOV/DEC	5	0	3
JAN/FEB/MAR	3	2	2
APR/MAY/JUNE	5	1	3

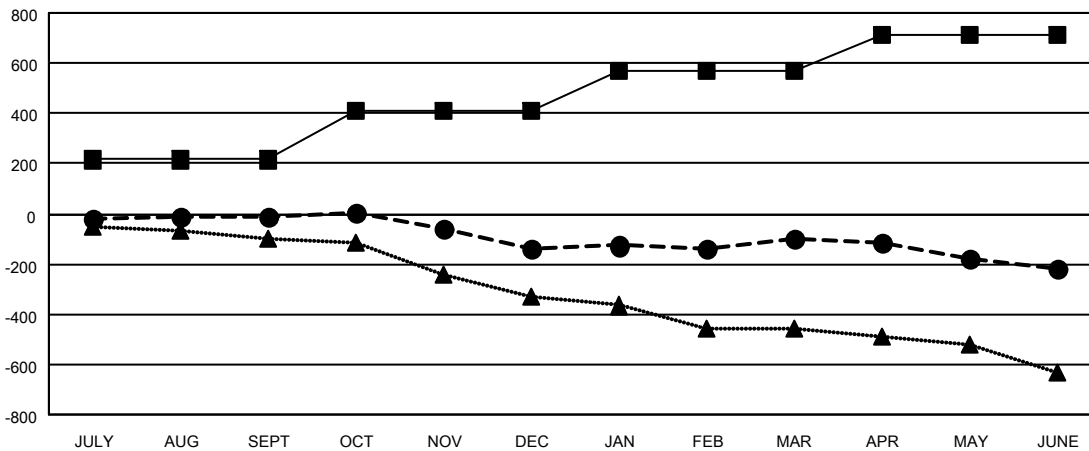
Members			
RESULTS FOR 2021-2022			
QUARTER	MEMBER GROWTH NET GOAL	MEMBER GROWTH ACTUAL	DROPPED MEMBERS ACTUAL (including transfers)
JULY/AUG/SEPT	215	242	221
OCT/NOV/DEC	196	228	342
JAN/FEB/MAR	160	250	185
APR/MAY/JUNE	142	320	415

GOALS AND ACTUAL NEW CLUBS CUMULATIVE



- - CURRENT YEAR GOALS FOR NEW CLUBS
- - CURRENT YEAR ACTUAL NEW CLUBS
- ▲ - LAST YEAR ACTUAL NEW CLUBS

GOALS AND ACTUAL MEMBERS CUMULATIVE



- - MEMBER GROWTH NET GOAL
- - MEMBER GROWTH ACTUAL
- ▲ - LAST YEAR MEMBERSHIP ACTUAL

DROPPED CLUBS: 11	
DROPPED MEMBERS	
DECEASED	227
CLUB CANCELLED	13
OTHER	923
TOTAL	1,163

231 CLUBS OF 377 ADDED 1 OR MORE NEW MEMBERS

[CLICK HERE FOR CUMULATIVE MEMBERSHIP DATA](#)

GENDER DISTRIBUTION	
MALE	6,904 (68.77%)
FEMALE	3,121 (31.09%)
NON BINARY	0 (0.00%)
PREFER NOT TO ANSWER	14 (0.14%)
TOTAL FAMILY UNIT MEMBERS	2,063
FAMILY MEMBERS PAYING HALF DUES	1,050