



GAT MONTHLY MEMBERSHIP PROGRESS REPORT

Results as of: 6/30/2022

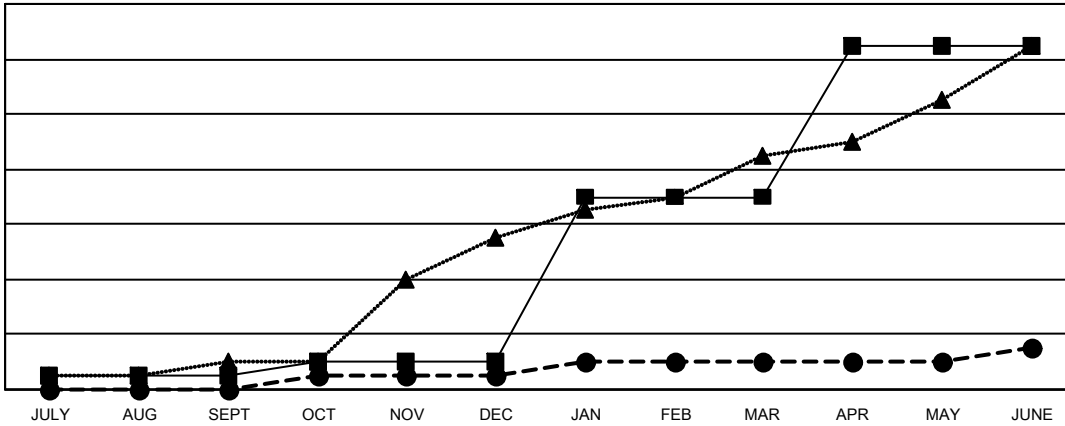
Multiple District 201

LOCATION: AUSTRALIA

Clubs			
RESULTS FOR 2021-2022			
QUARTER	NEW CLUB GOAL	NEW CLUBS	DROPPED CLUBS
JULY/AUG/SEPT	1	0	12
OCT/NOV/DEC	1	1	4
JAN/FEB/MAR	12	1	7
APR/MAY/JUNE	11	1	9

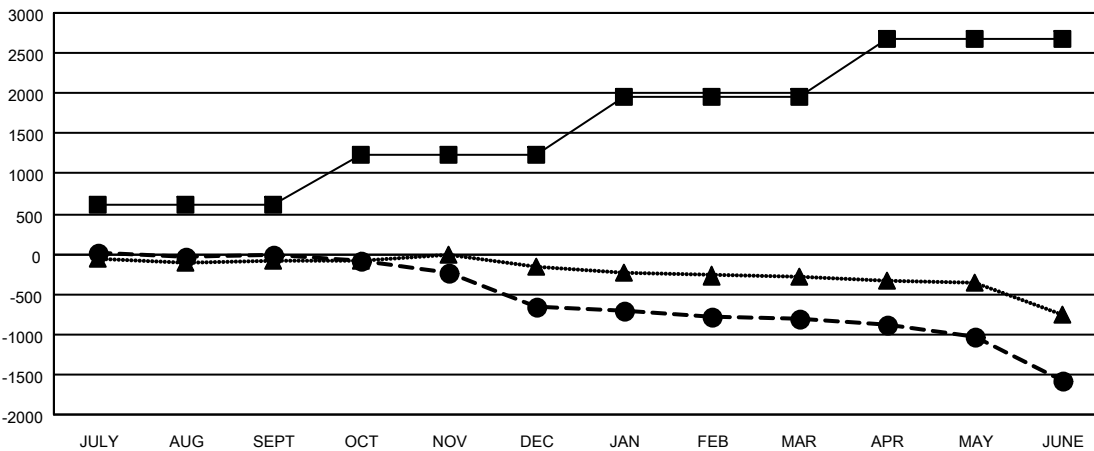
Members			
RESULTS FOR 2021-2022			
QUARTER	MEMBER GROWTH NET GOAL	MEMBER GROWTH ACTUAL	DROPPED MEMBERS ACTUAL (including transfers)
JULY/AUG/SEPT	618	628	548
OCT/NOV/DEC	612	485	1,041
JAN/FEB/MAR	732	641	683
APR/MAY/JUNE	713	837	1,460

GOALS AND ACTUAL NEW CLUBS CUMULATIVE



- - CURRENT YEAR GOALS FOR NEW CLUBS
- - CURRENT YEAR ACTUAL NEW CLUBS
- ▲ - LAST YEAR ACTUAL NEW CLUBS

GOALS AND ACTUAL MEMBERS CUMULATIVE



- - MEMBER GROWTH NET GOAL
- - MEMBER GROWTH ACTUAL
- ▲ - LAST YEAR MEMBERSHIP ACTUAL

DROPPED CLUBS: 32	
DROPPED MEMBERS	
DECEASED	351
CLUB CANCELLED	11
OTHER	3,370
TOTAL	3,732

734 CLUBS OF 1188 ADDED 1 OR MORE NEW MEMBERS

[CLICK HERE FOR CUMULATIVE MEMBERSHIP DATA](#)

GENDER DISTRIBUTION	
MALE	14,161 (63.32%)
FEMALE	8,198 (36.66%)
NON BINARY	1 (0.00%)
PREFER NOT TO ANSWER	3 (0.01%)
TOTAL FAMILY UNIT MEMBERS	3,508
FAMILY MEMBERS PAYING HALF DUES	1,781