



# GAT MONTHLY MEMBERSHIP PROGRESS REPORT

Results as of: 6/30/2022

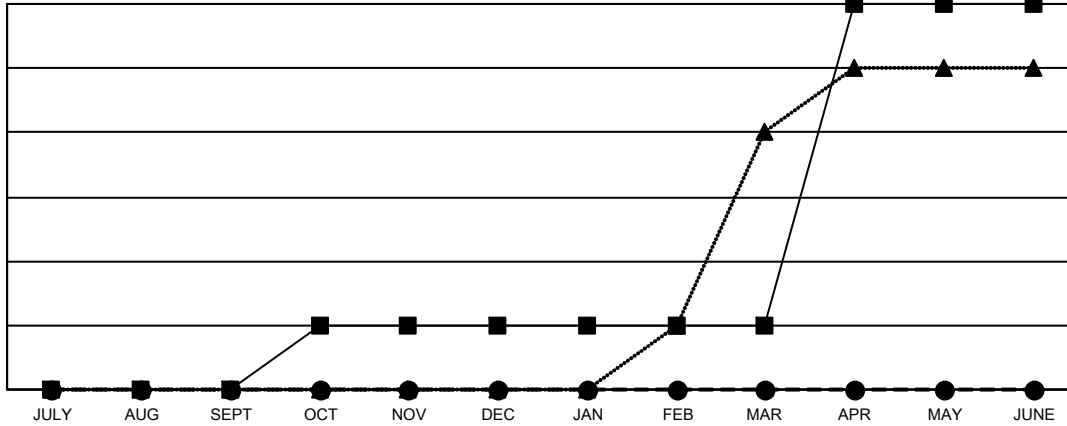
Multiple District 202

LOCATION: NEW ZEALAND

| Clubs                 |               |           |               |
|-----------------------|---------------|-----------|---------------|
| RESULTS FOR 2021-2022 |               |           |               |
| QUARTER               | NEW CLUB GOAL | NEW CLUBS | DROPPED CLUBS |
| JULY/AUG/SEPT         | 0             | 0         | 5             |
| OCT/NOV/DEC           | 1             | 0         | 3             |
| JAN/FEB/MAR           | 0             | 0         | 4             |
| APR/MAY/JUNE          | 5             | 0         | 2             |

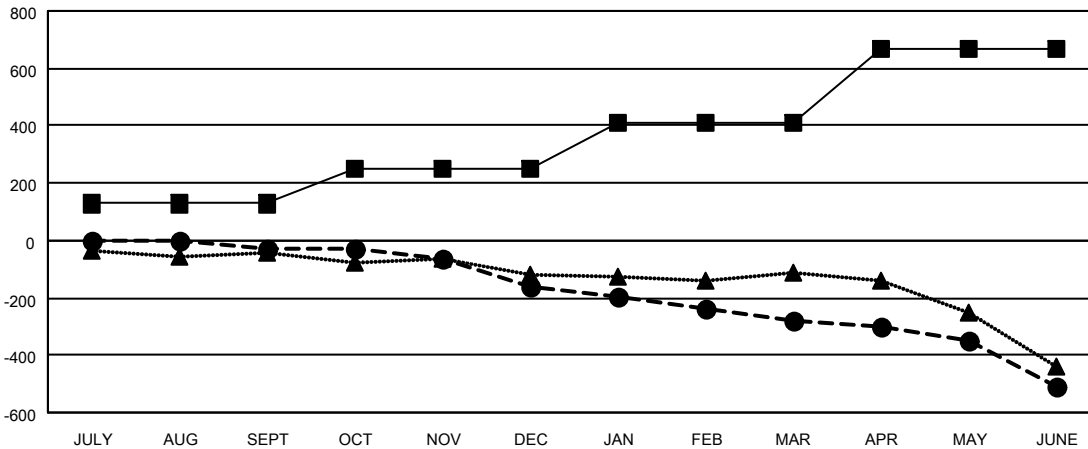
| Members               |                        |                      |  |
|-----------------------|------------------------|----------------------|--|
| RESULTS FOR 2021-2022 |                        |                      |  |
| QUARTER               | MEMBER GROWTH NET GOAL | MEMBER GROWTH ACTUAL | DROPPED MEMBERS ACTUAL (including transfers) |
| JULY/AUG/SEPT         | 128                    | 180                  | 165  |
| OCT/NOV/DEC           | 123                    | 162                  | 268  |
| JAN/FEB/MAR           | 157                    | 84                   | 184  |
| APR/MAY/JUNE          | 257                    | 216                  | 401  |

GOALS AND ACTUAL NEW CLUBS CUMULATIVE



- - CURRENT YEAR GOALS FOR NEW CLUBS
- - CURRENT YEAR ACTUAL NEW CLUBS
- ▲ - LAST YEAR ACTUAL NEW CLUBS

GOALS AND ACTUAL MEMBERS CUMULATIVE



- - MEMBER GROWTH NET GOAL
- - MEMBER GROWTH ACTUAL
- ▲ - LAST YEAR MEMBERSHIP ACTUAL

|                          |   |  |
|--------------------------|---|--|
| <b>DROPPED CLUBS: 14</b> | 194 CLUBS OF 323 ADDED 1 OR MORE NEW MEMBERS              | <b>GENDER DISTRIBUTION</b>                 |
| <b>DROPPED MEMBERS</b>   | <a href="#">CLICK HERE FOR CUMULATIVE MEMBERSHIP DATA</a> | MALE 5,516 (68.39%)                        |
| DECEASED 135             |   | FEMALE 2,549 (31.60%)                      |
| CLUB CANCELLED 4         |   | NON BINARY 1 (0.01%)                       |
| OTHER 879                |   | PREFER NOT TO ANSWER 0 (0.00%)             |
| <b>TOTAL 1,018</b>       |   | <b>TOTAL FAMILY UNIT MEMBERS 740</b>       |
|                          |   | <b>FAMILY MEMBERS PAYING HALF DUES 373</b> |