



GAT MONTHLY MEMBERSHIP PROGRESS REPORT

Results as of: 6/30/2022

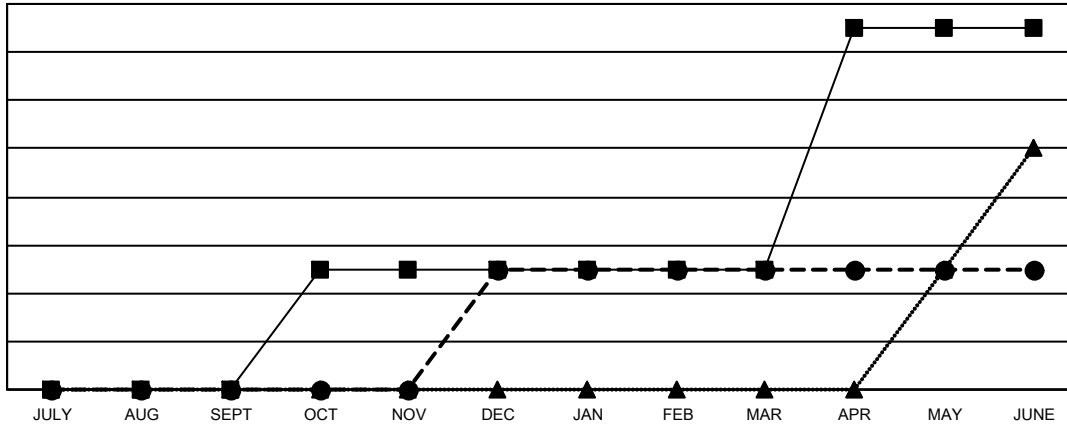
Multiple District 22

LOCATION: MARYLAND

Clubs			
RESULTS FOR 2021-2022			
QUARTER	NEW CLUB GOAL	NEW CLUBS	DROPPED CLUBS
JULY/AUG/SEPT	0	0	2
OCT/NOV/DEC	1	1	2
JAN/FEB/MAR	0	0	1
APR/MAY/JUNE	2	0	6

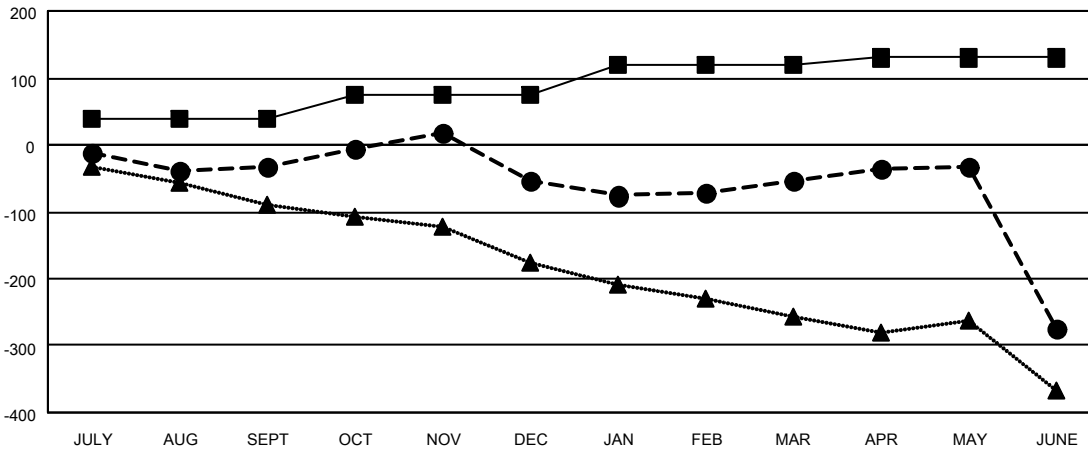
Members			
RESULTS FOR 2021-2022			
QUARTER	MEMBER GROWTH NET GOAL	MEMBER GROWTH ACTUAL	DROPPED MEMBERS ACTUAL (including transfers)
JULY/AUG/SEPT	40	129	147
OCT/NOV/DEC	35	205	211
JAN/FEB/MAR	45	140	129
APR/MAY/JUNE	10	182	364

GOALS AND ACTUAL NEW CLUBS CUMULATIVE



- CURRENT YEAR GOALS FOR NEW CLUBS
- CURRENT YEAR ACTUAL NEW CLUBS
- ▲- LAST YEAR ACTUAL NEW CLUBS

GOALS AND ACTUAL MEMBERS CUMULATIVE



- MEMBER GROWTH NET GOAL
- MEMBER GROWTH ACTUAL
- ▲- LAST YEAR MEMBERSHIP ACTUAL

DROPPED CLUBS: 11	127 CLUBS OF 209 ADDED 1 OR MORE NEW MEMBERS	GENDER DISTRIBUTION
DROPPED MEMBERS	CLICK HERE FOR CUMULATIVE MEMBERSHIP DATA	MALE 3,610 (63.12%)
DECEASED 152		FEMALE 2,109 (36.88%)
CLUB CANCELLED 91		NON BINARY 0 (0.00%)
OTHER 608		PREFER NOT TO ANSWER 0 (0.00%)
TOTAL 851		TOTAL FAMILY UNIT MEMBERS 1,072
		FAMILY MEMBERS PAYING HALF DUES 559