



GAT MONTHLY MEMBERSHIP PROGRESS REPORT

Results as of: 6/30/2022

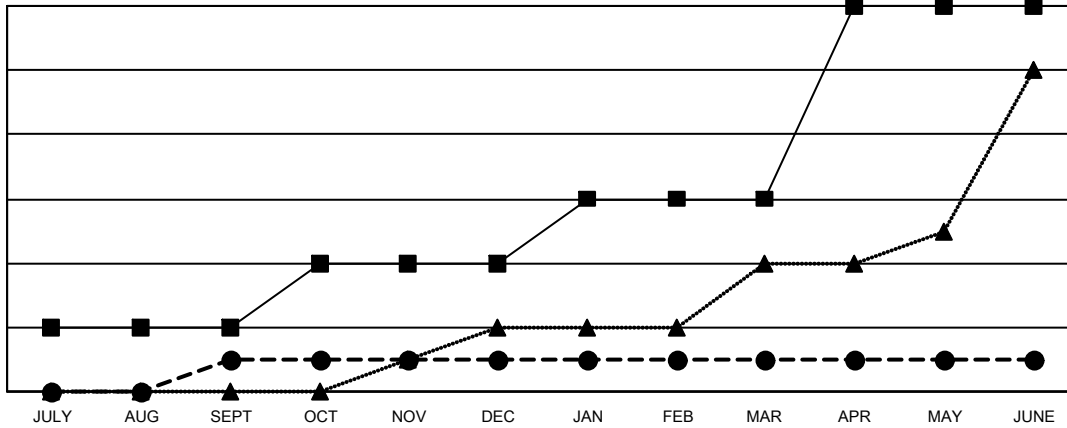
Multiple District 27

LOCATION: WISCONSIN

Clubs			
RESULTS FOR 2021-2022			
QUARTER	NEW CLUB GOAL	NEW CLUBS	DROPPED CLUBS
JULY/AUG/SEPT	2	1	0
OCT/NOV/DEC	2	0	6
JAN/FEB/MAR	2	0	0
APR/MAY/JUNE	6	0	5

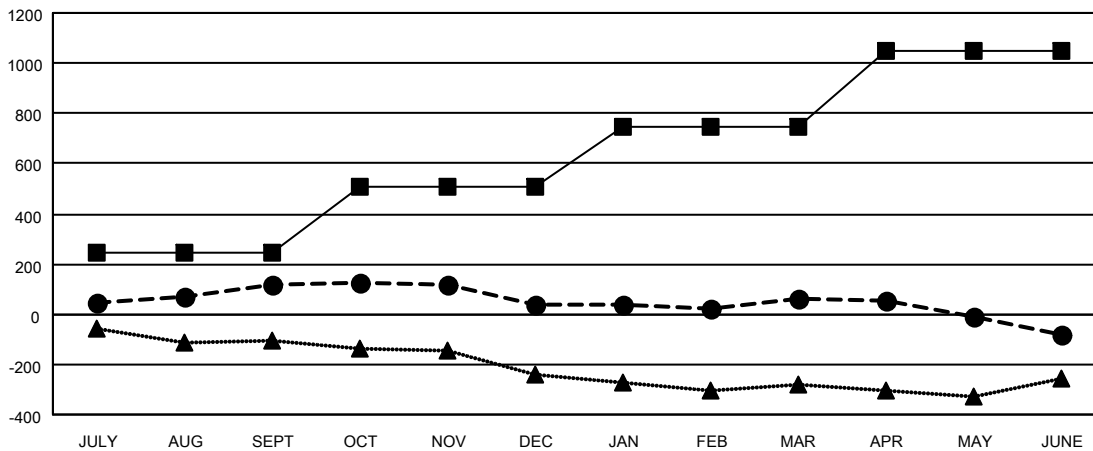
Members			
RESULTS FOR 2021-2022			
QUARTER	MEMBER GROWTH NET GOAL	MEMBER GROWTH ACTUAL	DROPPED MEMBERS ACTUAL (including transfers)
JULY/AUG/SEPT	243	461	312
OCT/NOV/DEC	265	362	395
JAN/FEB/MAR	241	408	354
APR/MAY/JUNE	301	486	581

GOALS AND ACTUAL NEW CLUBS CUMULATIVE



- CURRENT YEAR GOALS FOR NEW CLUBS
- CURRENT YEAR ACTUAL NEW CLUBS
- ▲- LAST YEAR ACTUAL NEW CLUBS

GOALS AND ACTUAL MEMBERS CUMULATIVE



- MEMBER GROWTH NET GOAL
- MEMBER GROWTH ACTUAL
- ▲- LAST YEAR MEMBERSHIP ACTUAL

DROPPED CLUBS: 11	368 CLUBS OF 515 ADDED 1 OR MORE NEW MEMBERS	GENDER DISTRIBUTION
DROPPED MEMBERS	CLICK HERE FOR CUMULATIVE MEMBERSHIP DATA	MALE 12,065 (71.97%)
DECEASED 228		FEMALE 4,699 (28.03%)
CLUB CANCELLED 51		NON BINARY 0 (0.00%)
OTHER 1,363		PREFER NOT TO ANSWER 0 (0.00%)
TOTAL 1,642		TOTAL FAMILY UNIT MEMBERS 3,456
		FAMILY MEMBERS PAYING HALF DUES 1,755