



# GAT MONTHLY MEMBERSHIP PROGRESS REPORT

Results as of: 6/30/2022

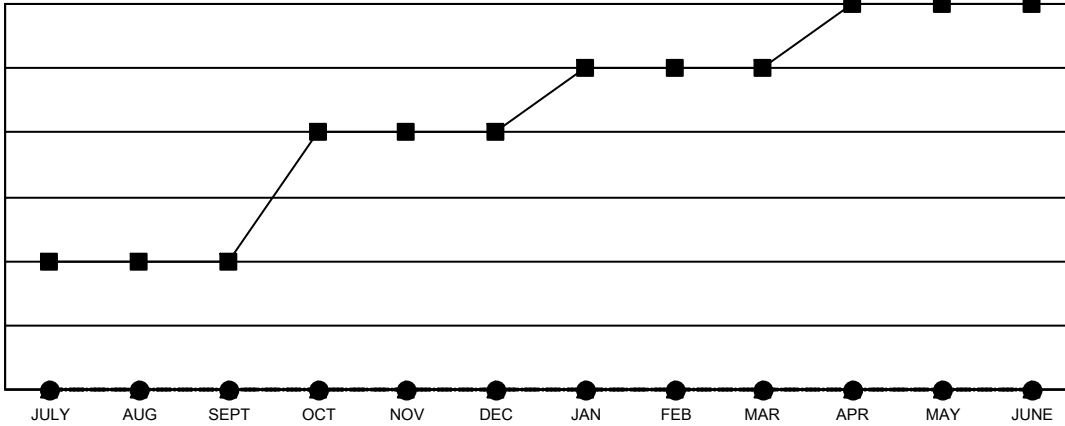
Multiple District 3

LOCATION: OKLAHOMA

Clubs			
RESULTS FOR 2021-2022			
QUARTER	NEW CLUB GOAL	NEW CLUBS	DROPPED CLUBS
JULY/AUG/SEPT	2	0	1
OCT/NOV/DEC	2	0	2
JAN/FEB/MAR	1	0	1
APR/MAY/JUNE	1	0	3

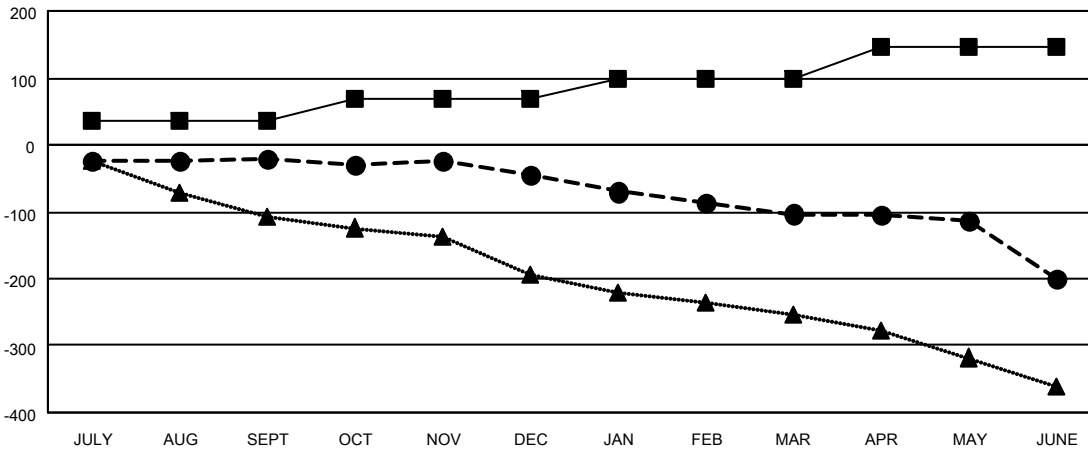
Members			
RESULTS FOR 2021-2022			
QUARTER	MEMBER GROWTH NET GOAL	MEMBER GROWTH ACTUAL	DROPPED MEMBERS ACTUAL (including transfers)
JULY/AUG/SEPT	35	78	83
OCT/NOV/DEC	35	78	99
JAN/FEB/MAR	28	103	133
APR/MAY/JUNE	48	73	166

GOALS AND ACTUAL NEW CLUBS CUMULATIVE



- CURRENT YEAR GOALS FOR NEW CLUBS
- CURRENT YEAR ACTUAL NEW CLUBS
- ▲- LAST YEAR ACTUAL NEW CLUBS

GOALS AND ACTUAL MEMBERS CUMULATIVE



- MEMBER GROWTH NET GOAL
- MEMBER GROWTH ACTUAL
- ▲- LAST YEAR MEMBERSHIP ACTUAL

<b>DROPPED CLUBS: 7</b>	82 CLUBS OF 143 ADDED 1 OR MORE NEW MEMBERS	<b>GENDER DISTRIBUTION</b>
<b>DROPPED MEMBERS</b>	<a href="#">CLICK HERE FOR CUMULATIVE MEMBERSHIP DATA</a>	MALE 2,024 (66.08%)
DECEASED 54		FEMALE 1,038 (33.89%)
CLUB CANCELLED 97		NON BINARY 0 (0.00%)
OTHER 330		PREFER NOT TO ANSWER 1 (0.03%)
<b>TOTAL 481</b>		TOTAL FAMILY UNIT MEMBERS 438
		FAMILY MEMBERS PAYING HALF DUES 221