



GAT MONTHLY MEMBERSHIP PROGRESS REPORT

Results as of: 6/30/2022

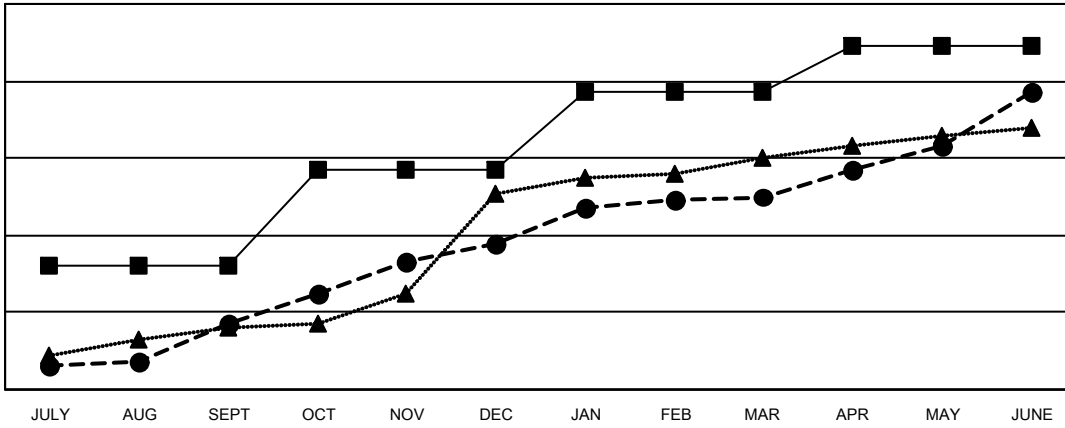
Multiple District 318

LOCATION: INDIA

Clubs			
RESULTS FOR 2021-2022			
QUARTER	NEW CLUB GOAL	NEW CLUBS	DROPPED CLUBS
JULY/AUG/SEPT	32	17	21
OCT/NOV/DEC	25	21	13
JAN/FEB/MAR	20	12	5
APR/MAY/JUNE	12	27	6

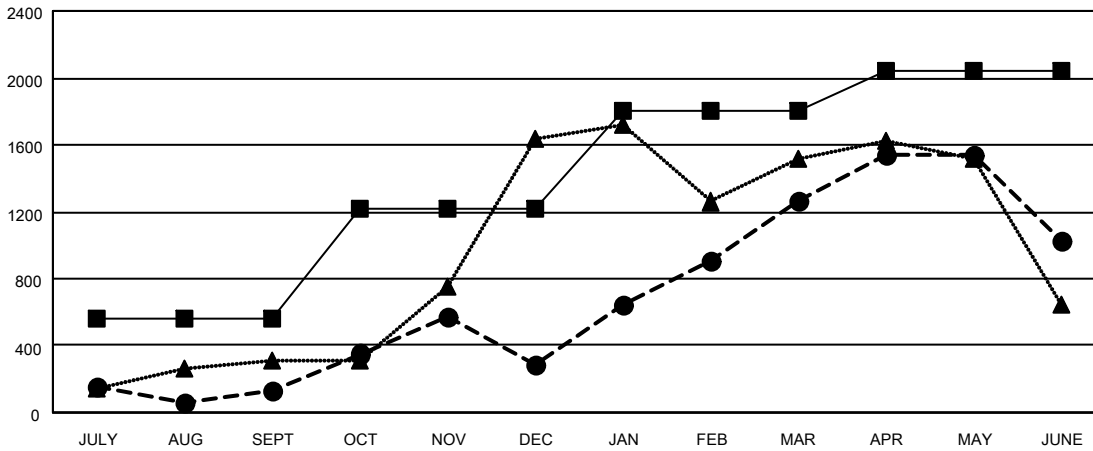
Members			
RESULTS FOR 2021-2022			
QUARTER	MEMBER GROWTH NET GOAL	MEMBER GROWTH ACTUAL	DROPPED MEMBERS ACTUAL (including transfers)
JULY/AUG/SEPT	560	864	697
OCT/NOV/DEC	655	1,184	973
JAN/FEB/MAR	590	1,514	384
APR/MAY/JUNE	240	1,583	1,727

GOALS AND ACTUAL NEW CLUBS CUMULATIVE



- - CURRENT YEAR GOALS FOR NEW CLUBS
- - CURRENT YEAR ACTUAL NEW CLUBS
- ▲ - LAST YEAR ACTUAL NEW CLUBS

GOALS AND ACTUAL MEMBERS CUMULATIVE



- - MEMBER GROWTH NET GOAL
- - MEMBER GROWTH ACTUAL
- ▲ - LAST YEAR MEMBERSHIP ACTUAL

DROPPED CLUBS: 45	532 CLUBS OF 787 ADDED 1 OR MORE NEW MEMBERS	GENDER DISTRIBUTION
DROPPED MEMBERS	CLICK HERE FOR CUMULATIVE MEMBERSHIP DATA	MALE 20,050 (80.67%)
DECEASED 140		FEMALE 4,804 (19.33%)
CLUB CANCELLED 838		NON BINARY 1 (0.00%)
OTHER 2,803		PREFER NOT TO ANSWER 0 (0.00%)
TOTAL 3,781		TOTAL FAMILY UNIT MEMBERS 8,604
		FAMILY MEMBERS PAYING HALF DUES 4,582