



# GAT MONTHLY MEMBERSHIP PROGRESS REPORT

Results as of: 6/30/2022

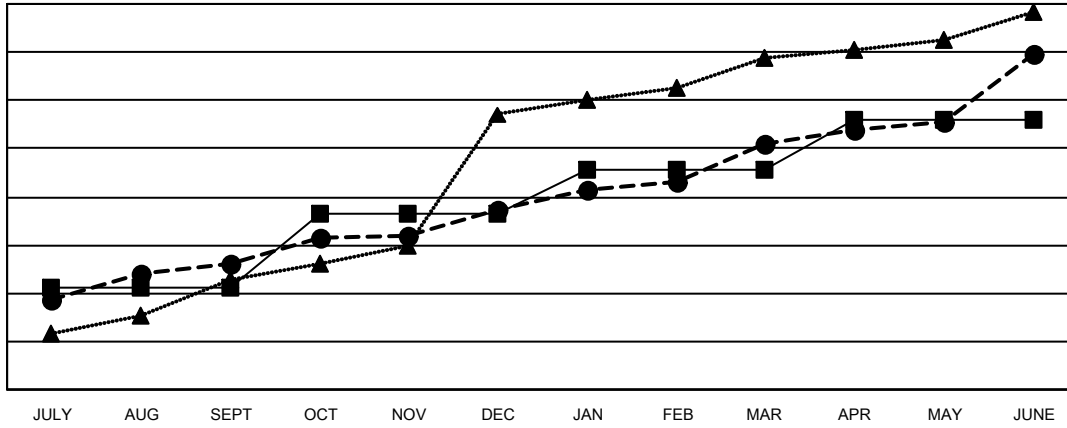
Multiple District 321

LOCATION: INDIA

Clubs			
RESULTS FOR 2021-2022			
QUARTER	NEW CLUB GOAL	NEW CLUBS	DROPPED CLUBS
JULY/AUG/SEPT	42	52	61
OCT/NOV/DEC	31	23	39
JAN/FEB/MAR	18	27	11
APR/MAY/JUNE	21	37	46

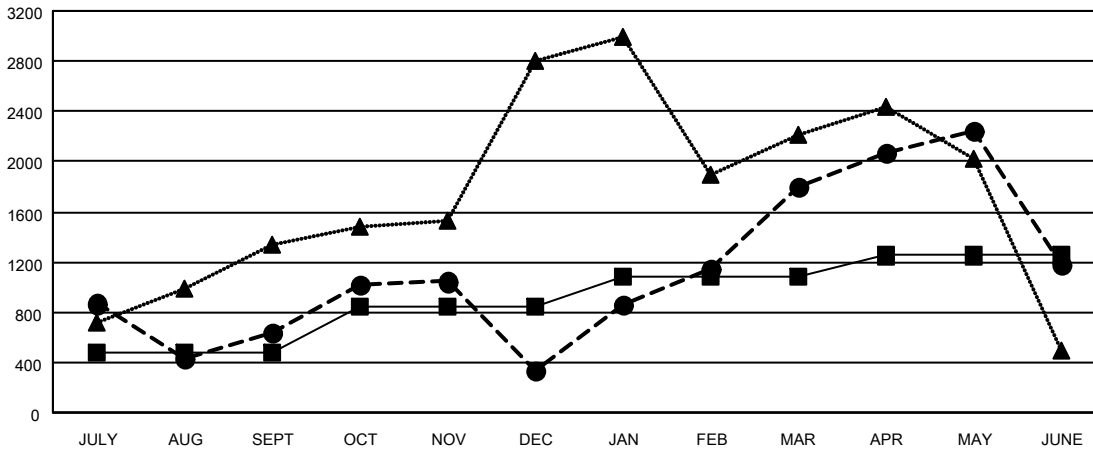
Members			
RESULTS FOR 2021-2022			
QUARTER	MEMBER GROWTH NET GOAL	MEMBER GROWTH ACTUAL	DROPPED MEMBERS ACTUAL (including transfers)
JULY/AUG/SEPT	480	2,516	1,644
OCT/NOV/DEC	370	1,601	1,744
JAN/FEB/MAR	235	2,472	671
APR/MAY/JUNE	165	3,538	3,917

GOALS AND ACTUAL NEW CLUBS CUMULATIVE



- CURRENT YEAR GOALS FOR NEW CLUBS
- CURRENT YEAR ACTUAL NEW CLUBS
- ▲- LAST YEAR ACTUAL NEW CLUBS

GOALS AND ACTUAL MEMBERS CUMULATIVE



- MEMBER GROWTH NET GOAL
- MEMBER GROWTH ACTUAL
- ▲- LAST YEAR MEMBERSHIP ACTUAL

DROPPED CLUBS: 154	
<b>DROPPED MEMBERS</b>	
DECEASED	134
CLUB CANCELLED	2,384
OTHER	5,463
<b>TOTAL</b>	<b>7,981</b>

821 CLUBS OF 1257 ADDED 1 OR MORE NEW MEMBERS

[CLICK HERE FOR CUMULATIVE MEMBERSHIP DATA](#)

GENDER DISTRIBUTION	
MALE	21,948 (67.87%)
FEMALE	10,375 (32.08%)
NON BINARY	0 (0.00%)
PREFER NOT TO ANSWER	13 (0.04%)
<b>TOTAL FAMILY UNIT MEMBERS</b>	<b>19,934</b>
<b>FAMILY MEMBERS PAYING HALF DUES</b>	<b>12,248</b>