



# GAT MONTHLY MEMBERSHIP PROGRESS REPORT

Results as of: 6/30/2022

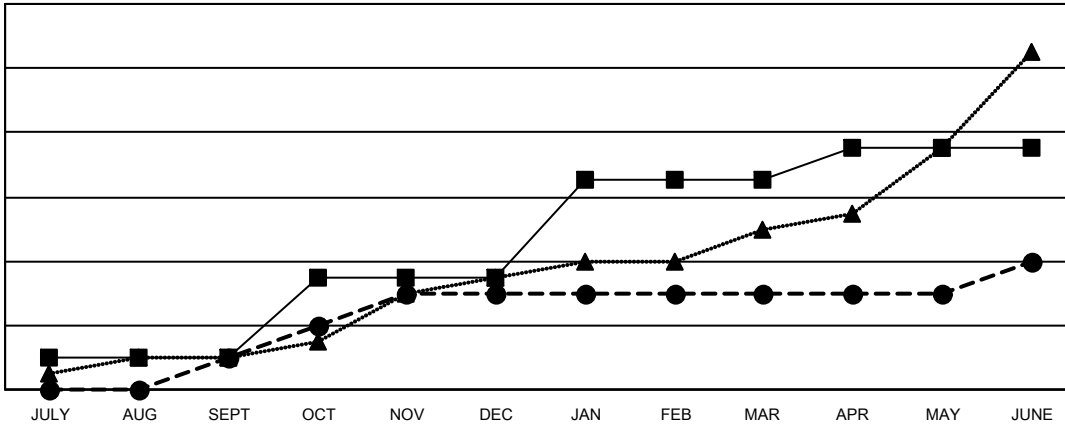
Multiple District A

LOCATION: ONTARIO

Clubs			
RESULTS FOR 2021-2022			
QUARTER	NEW CLUB GOAL	NEW CLUBS	DROPPED CLUBS
JULY/AUG/SEPT	2	2	3
OCT/NOV/DEC	5	4	2
JAN/FEB/MAR	6	0	3
APR/MAY/JUNE	2	2	9

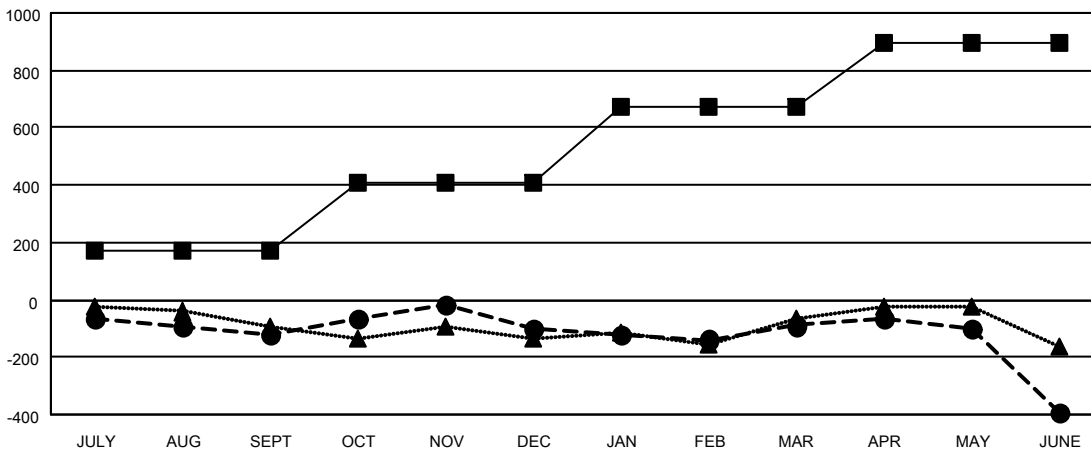
Members			
RESULTS FOR 2021-2022			
QUARTER	MEMBER GROWTH NET GOAL	MEMBER GROWTH ACTUAL	DROPPED MEMBERS ACTUAL (including transfers)
JULY/AUG/SEPT	170	256	333
OCT/NOV/DEC	240	484	421
JAN/FEB/MAR	260	331	275
APR/MAY/JUNE	225	635	869

GOALS AND ACTUAL NEW CLUBS CUMULATIVE



- - CURRENT YEAR GOALS FOR NEW CLUBS
- - CURRENT YEAR ACTUAL NEW CLUBS
- ▲ - LAST YEAR ACTUAL NEW CLUBS

GOALS AND ACTUAL MEMBERS CUMULATIVE



- - MEMBER GROWTH NET GOAL
- - MEMBER GROWTH ACTUAL
- ▲ - LAST YEAR MEMBERSHIP ACTUAL

DROPPED CLUBS: 17	335 CLUBS OF 542 ADDED 1 OR MORE NEW MEMBERS	<b>GENDER DISTRIBUTION</b>
<b>DROPPED MEMBERS</b>	<a href="#">CLICK HERE FOR CUMULATIVE MEMBERSHIP DATA</a>	MALE 7,943 (66.14%)
DECEASED 223		FEMALE 4,066 (33.86%)
CLUB CANCELLED 128		NON BINARY 0 (0.00%)
OTHER 1,548		PREFER NOT TO ANSWER 1 (0.01%)
<b>TOTAL 1,899</b>		<b>TOTAL FAMILY UNIT MEMBERS 2,153</b>
		FAMILY MEMBERS PAYING HALF DUES 1,114